

## P R E F A C E

This faculty handbook of Alcorn State University is issued by the President under the laws of the State of Mississippi and the regulations of the Board of Trustees of State Institutions of Higher Learning.

The Board of Trustees has complete responsibility for all functions of Alcorn State University except the power over building construction, which is exercised by the Bureau of Building, Grounds and Real Property Management.

The provisions of the first edition of this handbook had been the subject of a period of several years of extensive discussions by members of the faculty and members of the university administration. It was revised using the same basic procedures. It is hoped that it will serve to provide a framework for the equitable conduct of faculty affairs at Alcorn State University. The handbook will be reviewed from time to time. As the need for revision is determined, a similar process of extensive consultation with the faculty will be followed.

The faculty handbook is a policy statement of the University, it is not intended to be and shall not be considered as a contract or part of a contract between Alcorn State University and its faculty.

Any policy, statement or procedure contained in this handbook that is found to be in conflict with the policies of the Board of Trustees of State Institutions of Higher Learning of the State of Mississippi, the laws of the State of Mississippi, the federal government or relevant decisions of state or federal courts is declared null and void.

# TABLE OF CONTENTS

- I. AUTHORITY OF THE PRESIDENT**
- II. HISTORY**
- III. MISSION STATEMENT**
  - 3.1 Purpose
  - 3.2 Philosophy
  - 3.3 Long-Range Goals
  - 3.4 Type of Students to Be Attracted and What They Will Do When Graduated
  - 3.5 Geographic Region Served
  - 3.6 Major Functions
  - 3.7 Skills, Knowledge, Experiences, Attitudes To Be Acquired/Developed by Students' Outcomes
  - 3.8 Organizational Elements and Chart
  - 3.9 Map of the Campus
- IV. EQUAL OPPORTUNITY POLICY**
  - 4.1 Commitment to Equal Opportunity
  - 4.2 Policy on Advertising Vacancies and New Positions
- V. APPOINTMENT, PROMOTION, TENURE, RESIGNATION, TERMINATION AND GRIEVANCES**
  - 5.1 Definitions
    - 5.1.1 Full-time Faculty
    - 5.1.2 Part-Time Faculty
    - 5.1.3 Primary Faculty Appointment
    - 5.1.4 Secondary Faculty Appointment
    - 5.1.5 Non-academic Appointment (Additional Titles)
  - 5.2 Criteria for Appointment
    - 5.2.1 Effectiveness as a Teacher or Librarian
    - 5.2.2 Effectiveness in Scholarship and Other Creative Activities
    - 5.2.3 Effectiveness in Service Activities
    - 5.2.4 Effectiveness in Oral and Written Communications
  - 5.3 Definition of Faculty Status
    - 5.3.1 Instructor

- 5.3.2 Assistant Professor
- 5.3.3 Associate Professor
- 5.3.4 Professor
- 5.3.5 Other Titles
- 5.3.6 Level of Commitment in Above Ranks
- 5.3.7 Eligibility Requirements for Graduate Faculty
- 5.3.8 Salary Arrangements
- 5.4 Procedures for Appointment
  - 5.4.1 Initial and Probationary Appointments
  - 5.4.2 Tenured Appointments
  - 5.4.3 Non-Tenure Track Faculty
  - 5.4.4 Employment of Relatives
  - 5.4.5 Summer Employment Policy
- 5.5 Review of Faculty Members
  - 5.5.1 Faculty Evaluation
- 5.6 Tenure Policy
- 5.7 Procedures and Criteria for Promotion and Tenure
  - 5.7.1 Responsibility of Department/School
  - 5.7.2 Responsibility of Promotion, Rank and Tenure Committee
  - 5.7.3 Responsibility of the Dean
  - 5.7.4 Approval of the President
  - 5.7.5 Board of Trustees Action
  - 5.7.6 Notification of Action to Faculty Member
- 5.8 Non-reappointment, Resignation and Dismissal
  - 5.8.1 Notice of Non-Renewal or Termination of Non-Tenured Personnel
  - 5.8.2 Resignation
  - 5.8.3 Dismissal
  - 5.8.4 Termination of Tenured Faculty
  - 5.8.5 Termination Due to Financial Exigency
  - 5.8.6 Termination Due to Loss of Project Funds
- 5.9 Grievances

## **VI. FACULTY ROLES AND RESPONSIBILITIES**

- 6.1 Academic Freedom
- 6.2 Political Activity
- 6.3 Policy on Outside Employment, Consulting and Conflict of Interest
  - 6.3.1 Outside Employment
  - 6.3.2 Consulting and Conflict of Interest
- 6.4 Responsibilities
- 6.5 Work Load

**VII. EXTERNALLY FUNDED GRANTS AND CONTRACT POLICY**

- 7.1 Sponsored Program Incentive Award Program

**VIII. INSURANCE, RETIREMENT AND BENEFITS**

- 8.1 Insurance Programs
- 8.2 Retirement
  - 8.2.1 Public Employees' Retirement System
  - 8.2.2 Optional Retirement Plan
- 8.3 Worker's Compensation

**IX. COMPENSATION AND PAYROLL DEDUCTIONS**

**X. TRAVEL POLICIES**

- 10.1 General
- 10.2 Travel Procedures
- 10.3 Regulations
- 10.4 Travel Advance
- 10.5 Approval for Travel Abroad for Which Reimbursement is Required

**XI. HOLIDAYS, VACATIONS AND LEAVES**

- 11.1 Holidays
- 11.2 Vacation Policy
  - 11.2.1 Twelve-Month Employees
  - 11.2.2 Nine-Month Employees
- 11.3 Medical Leave Policy
  - 11.3.1 Twelve-Month Employees
  - 11.3.2 Nine-Month Employees
- 11.4 Sabbatical Leave
  - 11.4.1 Purpose
  - 11.4.2 Eligibility
  - 11.4.3 Application and Plan of Activities
  - 11.4.4 Formal Agreements and Requirements
  - 11.4.5 Compensation
  - 11.4.6 Rights and Fringe Benefits While on Leave
  - 11.4.7 Number on Leave at One Time
  - 11.4.8 Conclusion of Sabbatical Leave
- 11.5 Leaves of Absence
  - 11.5.1 Disability Leave
  - 11.5.2 Military Leave

- 11.5.3 Jury Duty and Elections
- 11.5.4 Educational Leave
- 11.5.5 Application for Leave Form

## **XII. ADMINISTRATIVE ORGANIZATION**

- 12.1 Executive Council
- 12.2 Responsibilities of Administrative Officers
  - 12.2.1 President
  - 12.2.2 Vice President
  - 12.2.3 Vice President for Academic Affairs
  - 12.2.4 Vice President for Student Affairs
  - 12.2.5 Vice President for Business Affairs
  - 12.2.6 Vice President for Institutional Advancement, Planning and Research

## **XIII. FACULTY COMMITTEES**

- 13.1 Faculty Senate
- 13.2 Graduate Council
- 13.3 Teacher Education Committee
- 13.4 Council of Deans and Directors
- 13.5 Faculty Assembly
- 13.6 Faculty and Staff Development Committee
- 13.7 Other Committees

## **XIV. UNIVERSITY PROPERTY MANAGEMENT**

- 14.1 Purchasing
- 14.2 Repairing Equipment
- 14.3 Use of University Equipment
- 14.4 Inventories

## **XV. UNIVERSITY RESOURCES AND SERVICES**

- 15.1 Automobile Registration
- 15.2 Bookstore
  - 15.2.1 Policies and Procedures for Textbooks
- 15.3 Dining Hall
- 15.4 Campus Newspaper
- 15.5 Campus Security
- 15.6 Health Services
- 15.7 Housing
  - 15.7.1 Availability
  - 15.7.2 Person to Contact

- 15.7.3 Payment of Rent and Security Deposit
- 15.7.4 Housing Policy, Care and Inspection
- 15.7.5 Services and Maintenance
- 15.7.6 Eviction
- 15.7.7 Pets
- 15.8 Laundry and Dry Cleaning
- 15.9 Library Services
- 15.10 Campus Speakers
- 15.11 Patent Policy
- 15.12 Post Office
- 15.13 Duplicating Services
- 15.14 Recreational Facilities
  - 15.14.1 Indoor Facilities
  - 15.14.2 Outdoor Facilities
- 15.15 Telephone Services

**XVI. POLICY ON COMPUTER RESOURCES AND SERVICES**

- 16.1 Computer Resources and Services
- 16.2 Electronic Data Processing Security

**XVII. AREA INFORMATION**

- 17.1 Voting
- 17.2 Vehicle Registration (State of Mississippi)
- 17.3 Medical Facilities in the Vicinity

**XVIII. SEXUAL HARASSMENT**

**XIX. PUBLICATIONS POLICY**

**XX. DRUG-FREE WORKPLACE POLICY STATEMENT**

- 20.1 Notification of Conviction
- 20.2 Condition for Employment

**XXI. SAFETY AND HEALTH POLICY**

**XXII. IMMIGRATION FORMS I-9**

**XXIII. ADMINISTRATIVE POLICY AND PROCEDURES ON SCIENTIFIC INTEGRITY**

- APPENDIX A:** Termination for Cause (Dismissal) of a Tenured Faculty Member Whose Term of Appointment Has Not Expired
- APPENDIX B:** Grievance Procedures
- APPENDIX C:** Termination of a Faculty Member Due to a Bona Fide Financial Exigency
- APPENDIX D:** Patent Policy
- APPENDIX E:** Policy on Copyright Laws and Regulations
- APPENDIX F:** The Alcorn Ode

## THE AUTHORITY OF THE PRESIDENT

The Board has delegated to the President of Alcorn State University the authority to administer the policies and programs of the institution. As the representative of the Board of Trustees, he is the official representative and spokesman for the university in all administrative relations with state, regional and national organizations and agencies.

Following are excerpts of the duties of institutional executive officers as contained in Section 301.0701 of the By-Laws and Policies of the Board of Trustees of State Institutions of Higher Learning, State of Mississippi, as of September 19, 1990:

The institutional executive officer of each of the several state institutions of higher learning shall be responsible for the administration of the schools and departments of his institution and for keeping its expenditures strictly in harmony with the budgetary authorizations of the Board and within the limitations provided therein.

The institutional executive officer shall have the initiative in shaping the educational policy and academic standards of his institution, and, in cooperation with the Commissioner, recommend such policy to the Board for approval.

The institutional executive officer shall have the initiative in the selection and recommendation for election by the Board of all employees and faculty members of his institution; and he shall have authority to fill vacancies that occur as emergencies, when the salary outlay is within the budget appropriations provided for such positions, all subject to authority for review and rejection or approval by the Board, in which body rests the sole power of election and confirmation or rejection of all appointments.

The institutional executive officer is charged with the responsibility for maintaining appropriate standards of conduct of students and is authorized to expel, dismiss, suspend, and place limitations on continued attendance, and to levy penalties for disciplinary violations subject to procedures of due process.

## II

### HISTORY

Alcorn State University, the oldest predominantly black land-grant university in the United States, had its beginning in 1830 as Oakland College, which, at that time, was for the education of white male students. The Presbyterian school closed its doors at the beginning of the Civil War so that its students might answer the call to arms. Upon failing to reopen after the war, the college was sold to the state for the education of its black citizens. The college was renamed Alcorn University in 1871 in honor of the late James L. Alcorn, who was then Governor of the State of Mississippi.

Alcorn's first president was Hiram. R. Revels, who was the first Black elected to the United States Senate and who resigned his seat in the Senate to become Alcorn's first president. Another distinguished American who was outstanding in the history of Alcorn was Major John R. Lynch, then Speaker of the Mississippi House of Representatives, who signed the bill for the establishment and creation of Alcorn University.

In 1862, Congress passed an act known as the "Morrill Land-Grant Act," whereby the national government gave to each state in the union public land script equal to 30,000 acres for each Senator and Representative in Congress for the "endowment, support, and maintenance of at least one college whose leading object shall be without excluding other scientific and classical studies, and including tactics, to teach such branches of learning as are related to agriculture and mechanical arts...in order to promote the liberal and practical education of the industrial classes in the several pursuits and professions of life."

In accordance with the above act, the Mississippi State Legislature took the following action in 1878:

Chapter XIX, Section 1. Be it enacted by the Legislature of the State of Mississippi, that the institution known as Alcorn University is hereby established as, and declared to be, an agricultural college for the education of the Negro youth of the State of Mississippi.

Section 9. Be it further enacted that each of said Board of Trustees shall possess all the power necessary and proper for the accomplishment of trust reposed in them to wit: The establishment and maintenance of a first-class institution at which the youth of the State of Mississippi may acquire a common school education and a scientific and practical knowledge of agriculture, horticulture, and the mechanical arts;

also the proper growth and care of stock, without, however, excluding scientific and classical studies, including military tactics.

On March 15 1974, the name of the institution was changed from Alcorn Agricultural and Mechanical College to Alcorn State University. This official designation was marked by a ceremony in Alcorn's historic Oakland Memorial Chapel when Governor William L. Waller signed House Bill No. 298, which was passed by the Mississippi Legislature, granting university status to five of the state's colleges.

On January 23, 1965, the President of the university signed, with the approval of the Board of Trustees of State Institutions of Higher Learning of the State of Mississippi, the "Assurance of Compliance with the Department of Health, Education and Welfare Regulation Under Title VI of the Civil Rights Act of 1964." Alcorn State University thereby agreed that it would comply with Title VI of the Civil Rights Act of 1964 (P.L. 88-352) and all requirements imposed by or pursuant to the regulation of the Department of Health, Education and Welfare (45CFR Part 80) issued pursuant to that title, to the end that, in accordance with Title VI of that act and the regulations, no person in the United States shall, on the grounds of race, color, or national origin, be excluded from participation in, be denied the benefits of, or be otherwise subjected to discrimination under any program which the university receives federal financial assistance.

Alcorn State University is an equal opportunity university as well as an equal opportunity employer. It does not discriminate on the basis of race, color, national origin, religion, sex, age or physical handicap in any of its programs.

Alcorn State University, along with seven other institutions of higher learning in the State of Mississippi, operates under the authority and control of the Board of Trustees of State Institutions of Higher Learning. The Board was created by a constitutional amendment of 1944 and consists of 12 members. The governor appoints four members to serve for 12 years. One member of the Board of Trustees is named from each of the five congressional districts as constituted in 1914, one from each of the three state Supreme Court districts, and two from the state at large.

### III

## MISSION STATEMENT

### 3.1 PURPOSE:

Alcorn State University is a co-educational, land-grant, liberal arts, science and teacher education public institution offering programs leading to associate (in nursing only), baccalaureate, master's and educational specialist degrees. The primary purpose of the university is to provide well-rounded, quality educational programs to meet the needs of all students. While the university is committed to the further development of educational programs to serve the best interests, needs and aspirations of talented students, it is also sensitive to and active in educating those students who suffer under the handicaps of socioeconomic and cultural deprivation.

As a land-grant university located in southwest Mississippi, the university is primarily, but not exclusively, concerned with meeting the higher education needs of the region while cognizant of its role in meeting the needs of the state and nation.

### 3.2 PHILOSOPHY:

Alcorn State University is committed to the principle of access and quality in all its programs and services. The university actively recruits and admits qualified students without regard to race, color, nationality, gender, age, or physical handicaps. The university seeks to develop among its clientele a broad knowledge and understanding of the basic principles and values necessary to perform intelligently and responsibly as effective citizens in a free and democratic society.

In performing its legislated functions as a land-grant institution, Alcorn envisions the fundamental and historical concern for preparing its students to effectively live in the mainstream of contemporary America. The institution strives to prepare graduates who are useful, proficient, efficient, of good character, and productive. The university provides an atmosphere embodying high ideals of character, scholarship and democratic living and a program of liberal education which seeks to help each student attain his/her rightful place in society. To assume the role of a citadel of learning where scholars are freely encouraged to seek new truths and make the proper application of existing knowledge for the betterment of mankind is regarded as the primary aim and mission of Alcorn State University. The university is committed to providing the support programs and services necessary to facilitate the optimum success of each student.

### **3.3 LONG-RANGE GOALS:**

In accordance with and in support of its purposes and philosophy, the institution seeks to achieve the following long-range (continuing) goals:

1. To prepare students for scholarship and service in the areas of general and applied knowledge.
2. To develop leadership, in general, and in areas peculiar to the various curricular offerings for Mississippi, the United States, and the world.
3. To perform the roles and functions of a land-grant university in the areas of teaching, research and extension services.
4. To contribute various educational services to meet the needs of the community at large.
5. To provide curricula and other services to respond to the demands of a dynamic democratic society.
6. To provide such diversification of specialized educational programs as to accommodate students with varying educational and occupational interests and levels of potential for achievement.
7. To provide an undergraduate education that will enable students to continue their work in graduate and professional schools and to engage in teaching and other professions.
8. To provide graduate programs which enable students to obtain advanced training in specialized fields and to contribute to the advancement of knowledge and new truths through scholarly research and inquiry.
9. To strengthen and maintain a viable comprehensive planning, management and evaluation system in order to facilitate effective decision-making, resource allocation and utilization, fiscal accountability and program review, and evaluation.
10. To achieve and maintain optimum student retention by providing effective services in the areas of student advisement, counseling, tutoring, cultural activities and instructional methodologies.
11. To secure the financial resources necessary to carry out the mission and goals of the institution.

12. To provide opportunities for students to develop as responsible citizens and scholars in a democratic society by maintaining a campus atmosphere which is safe, healthy and conducive to cultural, personal and social development.

### **3.4 TYPE OF STUDENTS TO BE ATTRACTED AND WHAT THEY WILL DO WHEN GRADUATED:**

Alcorn State University actively recruits and seeks to admit qualified students without regard to ethnicity, socioeconomic or cultural backgrounds, or gender. The university will continue its thrust to recruit talented students as well as students with correctable academic deficiencies. In the past, more than 90 percent of the students have been African-Americans, with the majority of the rest being Caucasian. A predominance of the students attending the university have been from southwest Mississippi; however, there have been students from all counties in the state as well as from other states and several foreign countries. The university will continue to place primary emphasis on recruiting students from southwest Mississippi as well as from the entire state. Approximately 80 percent of the students live in residence halls. The student body is comprised of approximately 60 percent women and 40 percent men.

The university strives to prepare graduates for leadership, managerial, professional and technical positions in business, government, and the nonprofit sector. Graduating students will enter employment and/or pursue advanced studies in professional and/or graduate schools.

### **3.5 GEOGRAPHIC REGION SERVED:**

Alcorn State University has been designated as the regional public university located in southwest Mississippi. The university, therefore, considers that region as its primary service area: however, it serves students from throughout the State of Mississippi, other states and foreign countries. In its research and extension land-grant functions, the university seeks to provide programs and services to limited resource individuals throughout the State of Mississippi.

As a medium for effective discovery and advancement of knowledge, the university provides the environment where outstanding faculty and staff interact with, inspire, and stimulate students, thereby enhancing the acquisition, advancement, transmission and application of knowledge. The university also encourages scholarly inquiries and creative activities among students and faculty.

### **3.6 MAJOR FUNCTIONS:**

The function of Alcorn State University are subsumed under three broad categories; namely, teaching, research, and public service. While effective teaching

is a primary focus on the university, research and public service are encouraged and pursued as important functions in their own right and are compatible with and complementary to the teaching/learning functions.

As a medium for effective discovery and advancement of knowledge, the university provides the environment where outstanding faculty and staff interact with, inspire, and stimulate students, thereby enhancing the acquisition, advancement, transmission, and application of knowledge. The university also encourages scholarly inquiries and creative activities among students and faculty.

As a land-grant institution, Alcorn State University has a special obligation to conduct applied research and provide cooperative extension services geared toward improving the socioeconomic conditions and quality of life for limited resource individuals in Mississippi.

Central to the functions of the university is that of providing a wholesome environment which is conducive to the intellectual, cultural, physical, emotional, spiritual and social development of students and the encouragement of freedom of thought and inquiry among students and faculty.

### **3.7 SKILLS, KNOWLEDGE, EXPERIENCES ATTITUDES TO BE ACQUIRED/DEVELOPED BY STUDENTS' OUTCOMES:**

The most significant outcome of Alcorn State University, in the final analysis, is the quality of its graduates. Consequently, the university seeks to prepare graduates who are competitive in the employment marketplace and/or in professional and graduate schools and are of good character and productive members of their communities and society at large. Among the skills, knowledge, and attitudes that should be exemplified by students completing the undergraduate program at Alcorn State University are the following:

1. The quest for new knowledge and the ability to pursue and acquire additional knowledge.
2. The ability to communicate effectively, orally, and in writing using standard, acceptable language.
3. The ability to think critically and to gather, analyze, and synthesize data and information from a variety of perspectives, and derive and formulate logical conclusions.
4. An understanding of and appreciation for the democratic process in society and the roles and responsibilities of citizens in ensuring the effectiveness of the process.

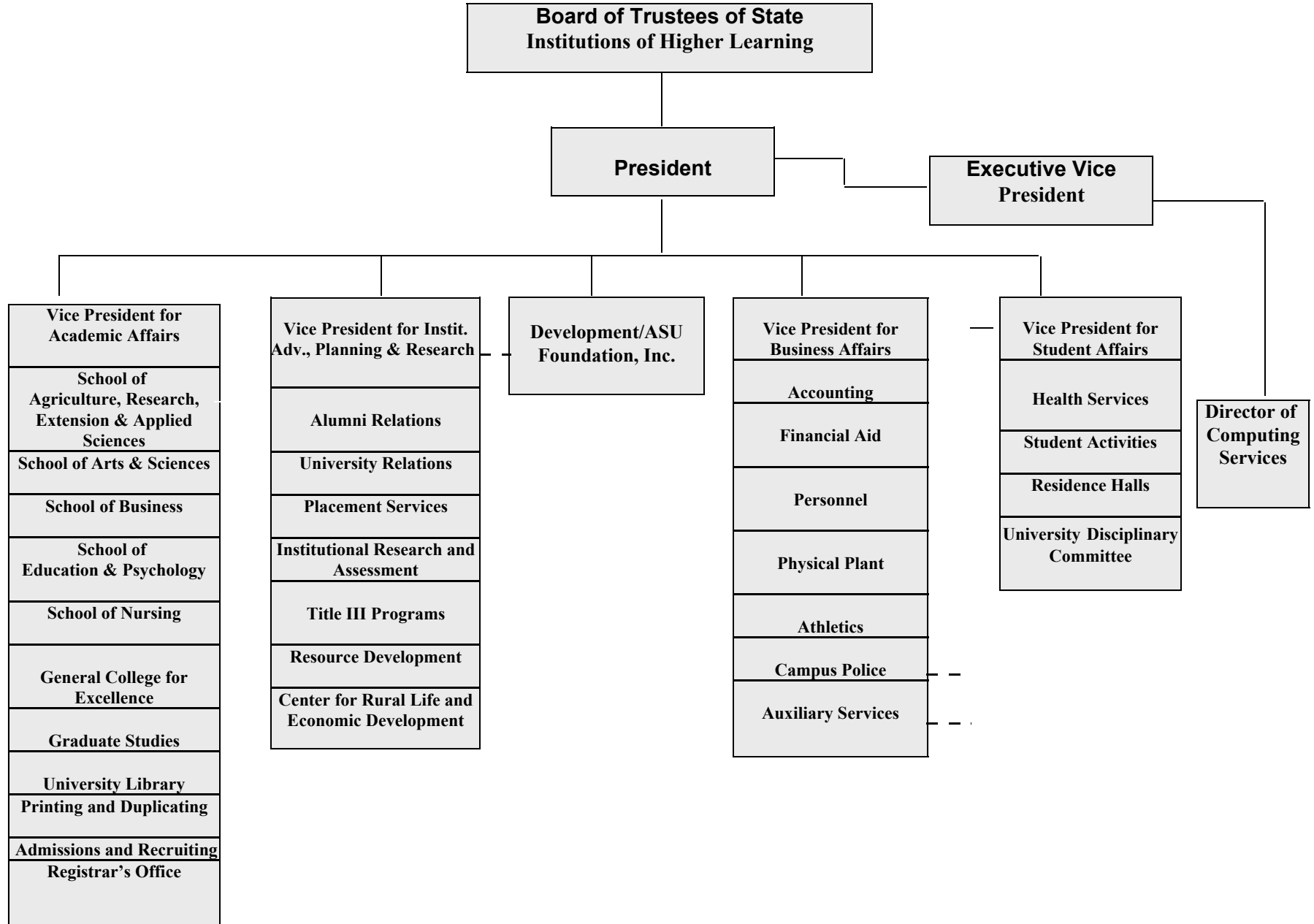
5. The ability to apply general principles from such disciplines as the natural and social sciences--chemistry, biology, mathematics, sociology, economics, philosophy, psychology, etc.--in the conduct of their lives and for the betterment of mankind.
6. The ability to demonstrate (through appropriate tests) in-depth understanding of and competencies in their major fields of study.
7. The ability to obtain employment commensurate with their education and interests and to make appropriate career progression.
8. The ability to progress and succeed in graduate and professional schools to which they are admitted.
9. An understanding and acceptance of their own cultural heritage and the recognition of ethnic and cultural diversity as desirable and beneficial to society.
10. The ability to demonstrate leadership, human relations and social skills which are expected of a university graduate.
11. An expressed willingness and desire to support the university in its thrust to provide programs and services for desiring and deserving students as well as for the general public.

Students are exposed to a variety of experiences through such programs as the Honors Curriculum Program, internships, cooperative education, seminars with nationally renown lecturers, and numerous professional, civic, and social organizations. These experiences further stimulate students' intellectual development, leadership skills and pre-graduation, professional experiences.

### **3.8 ORGANIZATIONAL ELEMENTS AND CHART:**

The President of the institution is responsible to the Board of Trustees for the overall supervision and management of Alcorn State University, including the schools and departments of the institution. The organizational chart on the next page gives a graphic illustration of the organization of the six major areas of the university and their subunits. The specific responsibilities of the President and other administrative officers are contained in Section XII of the Faculty Handbook.

# Alcorn State University Organizational Chart



# Organizational Chart for Academic Affairs

**Board of Trustees of State  
Institutions of Higher Learning**

**President**

**Vice President of  
Academic Affairs**

<b>School of Arts &amp; Sciences</b> <b>Dr. Bernard Cotton</b>
Department of Biological Sciences
Department of Chemistry & Physics
Department of Communications
Department of English & Foreign Languages
Department of Fine Arts
Department of Mathematical Sciences
Department of Military Science
Department of Social Sciences

<b>School of Agriculture &amp; Applied Science</b> <b>Dr. Napoleon Moses</b>
Department of Agriculture
Department of Family & Consumer Sciences
Department of Industrial Technology

<b>School of Business</b> <b>Dr. John Gill</b>
Department of Accounting & Business Administration
Department of Administrative Office Management

<b>School of Education &amp; Psychology</b> <b>Dr. Josephine Posey</b>
Department of Education & Psychology
Department of Health, Physical Education & Recreation
Department of Graduate Nursing

<b>School of Nursing</b> <b>Dr. Frances Henderson</b>
Department of Associate Degree Nursing
Department of Baccalaureate Degree Nursing

<b>General College for Excellence</b> <b>Dr. Thelma Spencer</b>
Counseling & Testing
Honors Program
Special Programs

<b>School of Graduate Studies</b> <b>Dr. Irene Johnson</b>
---

**Registrar**

**University Library**

**Printing and Duplicating**

**Admissions & Recruiting**

**ALCORN STATE UNIVERSITY**

**MAP**

# ALCORN STATE UNIVERSITY

DR. CLINTON BRISTOW, JR., PRESIDENT

ALCORN STATE, MISSISSIPPI

- 1 David C. Carter Dairy
- 2 Johnnie B. Collins Beef Research Facility
- 3 Davey L. Whitney Health, Physical Education and Recreation Complex
- 4 Jesse A. Morris, Sr./W.C. Boykin Agricultural Science Building
- 5 Extension and Research Complex

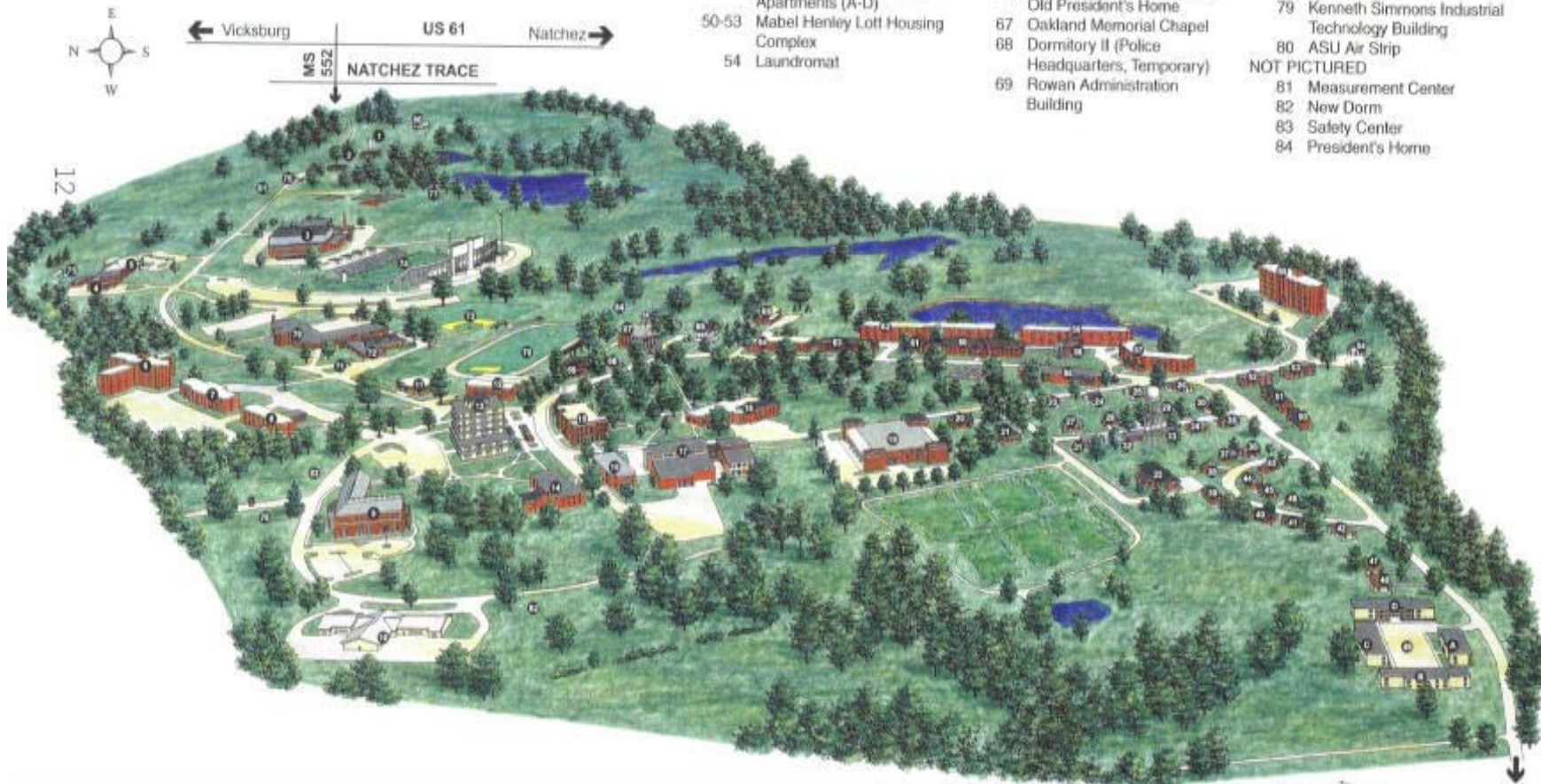
- 6 W.S. Demby Men's Tower
- 7 Hiram R. Revels Hall
- 8 Albert L. Lott Hall
- 9 Math and Science Building
- 10 Physical Plant and Motor Pool
- 11 Financial Services Building
- 12 E. E. Simmons Gymnasium
- 13 Walter Washington Administration-Classroom Building (*Office of Admissions*)

## LEGEND

- 14 Fine Arts Building
- 15 Bowles Hall
- 16 Eunice Powell Hall
- 17 James L. Bolden Campus Union Building
- 18 William H. Bell Dining Hall
- 19 J.D. Boyd Library
- 20 Dorothy Gordon Gray Home Management House
- 21 V.I.P. Home
- 22 Felix H. Dunn Infirmary
- 23-48 Faculty/Staff Housing
- 49 Matt Thomas, Jr. Garden Apartments (A-D)
- 50-53 Mabel Henley Lott Housing Complex
- 54 Laundromat

- 55 Cleopatra D. Thompson Women's Tower
- 56 Alice Tanner Hall
- 57 Mabel Thomas Hall
- 58 Belle Lettres Hall
- 59 Robinson Hall
- 60 Lanier Hall
- 61 Dormitory III
- 62 Burnus Hall
- 63 Harmon Hall
- 64 E. Albert Dumas Hall
- 65 Laundry
- 66 Alumni House/Faculty Club-Old President's Home
- 67 Oakland Memorial Chapel
- 68 Dormitory II (Police Headquarters, Temporary)
- 69 Rowan Administration Building

- 70 Henderson Stadium (Track Field)
- 71 ASU Service Station
- 72 Military Science Building
- 73 Baseball Field
- 74 Jack Spinks Stadium/Dwight Fisher Field
- 75 Agriculture Experiment Station (fruits and vegetables)
- 76 Welcome Center I
- 77 Willie Mae Latham Taylor Recreation Park
- 78 Welcome Center II
- 79 Kenneth Simmons Industrial Technology Building
- 80 ASU Air Strip
- NOT PICTURED
- 81 Measurement Center
- 82 New Dorm
- 83 Safety Center
- 84 President's Home



## IV

### EQUAL OPPORTUNITY POLICY

#### 4.1 COMMITMENT TO EQUAL OPPORTUNITY:

**Alcorn State University hereby reaffirms its policy of equal opportunity.**

**Alcorn State University is expressly committed to maintaining and promoting nondiscrimination in all aspects of recruitment and employment of individuals at all levels throughout the university. Specifically, it is the intent of the university to recruit, hire, and promote all faculty and staff without regard to race, color, religion, sex, national origin, handicapped condition unrelated to job performance, Vietnam era or disabled veteran status. The university will not tolerate any conduct of sexual harassment. The university has an affirmative action program for ensuring equal employment opportunities for women, members of racial minority groups, handicapped persons, and Vietnam era and disabled veterans. The university complies with the Age Discrimination in the Employment Act of 1967, as amended, and the Vietnam Era Veterans Act of 1986. Decisions in all employment actions will be based upon the individual's qualifications, merit, and professional ability, and in conformance with all current legal requirements. All personnel actions, programs, and facilities will be administered in accordance with equal opportunity and affirmative action policies, including but not limited to recruitment, selection, assignment, classification, promotion, demotion, transfer, layoff and recall, termination, determination of wages, conditions and benefits of employment, selection for training or retraining, and social and recreational programs.**

**The Director of Personnel of the university is to keep the President advised on the status of equal employment and affirmative action on a continuing basis. He is directly responsible for the administration of the affirmative action plans.**

**To realize the declarations set forth above, the university will, in all solicitations and advertisements for employment vacancies placed by or on behalf of the university, state its position as an equal opportunity/affirmative action employer. The university will engage the services of only those professional organizations, employment agencies, contractors or agents whose policies are in alignment with the equal employment opportunity policy of the university. The university will broadly publish and circulate its policy of equal employment opportunity by including in all correspondence, media communication, and printed matter for employment purposes. Further, the university will consider, through appropriate and designated procedures, the complaint or grievance of any individual who has reason to feel that he or she has been affected by discrimination because of race, color, religion, sex, national origin, age, handicapping conditions, or Vietnam era or disabled veteran status.**

**Further, as an institution of higher education, and in consonance with its policy of equal employment opportunity, the university hereby declares its policy of equal educational opportunity. All available student job opportunities will be filled**

without regard to an applicant's race, color, religion, sex, national origin, handicapping condition unrelated to job performance, Vietnam era or disabled veteran status. This policy will be noted in all student handbooks and the complaint or grievance of any student who has reason to think he or she has been affected by discrimination will be considered through appropriate procedures.

#### **4.2 POLICY ON ADVERTISING VACANCIES AND NEW POSITIONS:**

As an equal opportunity institution that fosters the posture and practice of equal employment opportunities for current and potential employees, the university is committed to advertise vacancies and new positions as widely as is practical. Consequently, all professional vacancies and new positions shall be posted on the campus and advertised in at least one widely circulated publication. To the extent feasible, a minimum of two weeks shall be allowed from the time a vacancy or new position is published until the deadline for the receipt of applications.

Currently, employed individuals are eligible and encouraged to apply for any advertised position at the university for which they are qualified.

Vacancies and new positions shall be posted in the Office of Personnel and in each department on campus. It is the responsibility of the appropriate vice president to ensure that vacancies and new positions are properly advertised. The Vice Presidents shall work closely with the university Executive Compliance Officer and the Personnel Office to ensure compliance with applicable federal and state laws in advertising vacancies and new positions and in filling those positions.

All nonprofessional vacancies and positions will be posted in the Office of Personnel and in the department that is advertising the vacancy or new position. Nonprofessional positions shall also be advertised through the Mississippi Employment Security Commission. The vice president in whose unit a vacancy or position occurs is responsible to work with the Personnel Office to ensure appropriate posting and advertising. To the extent feasible, nonprofessional positions will be posted/advertised for at least two weeks before the deadline for applications. Currently, qualified employees are eligible and are encouraged to apply for posted/advertised positions.

**APPOINTMENT, PROMOTION, TENURE,  
RESIGNATION, TERMINATION  
AND GRIEVANCES**

**5.1 DEFINITIONS:**

**5.1.1 Full-time Faculty:**

Full-time faculty are those faculty members whose primary appointment is within an instructional department within the university and carry either the minimum number of credit hours designated by the university for full-time faculty or an equivalent number of hours in teaching, research and/or service activities.

**5.1.2 Part-time Faculty:**

Part-time faculty are those faculty members whose primary appointment is in a non-instructional department within the university, but who carry less than the minimum number of credit hours designated by the university for full-time faculty. Part-time faculty are also those faculty members whose primary appointment is within an instructional department, but whose teaching, research and/or service activities are less than that designated by the university for full-time faculty.

**5.1.3 Primary Faculty Appointment:**

This is the appointment in an academic unit through which the faculty member has a primary academic affiliation. It is through this unit that the individual holds tenure in the university, if any, and it is from this unit that recommendations for appointment, promotion, tenure, salary adjustment and other actions concerning a faculty member are initiated (see Section 5.3.6).

**5.1.4 Secondary Faculty Appointment:**

This is an appointment an individual faculty member may hold in addition to the primary faculty appointment. Usually, an individual may not hold academic rank in a secondary appointment higher than that in the primary appointment. No tenure is granted through a secondary appointment.

### **5.1.5 Non-academic Appointment (Additional Titles):**

For those members of the faculty who also work at Alcorn State University in a non-faculty capacity, their non-faculty Alcorn State work assignment may be called a Non-academic appointment (see Section 5.3.6).

## **5.2 CRITERIA FOR APPOINTMENT:**

Criteria for faculty appointments and promotions and the award of tenure to faculty relate to faculty activities in teaching, research and service. It is recognized that an individual may not meet the criteria in these three areas equally well and that all may not be of equal importance for each academic rank or for any particular field of endeavor. While individual faculty member achievements are to be considered, it is also important that the program priorities of the appointing unit be considered as well. Wherever appointment, promotion and tenure recommendations are to be initiated, these recommendations are to be initiated and forwarded to the Office of the President for approval.

### **5.2.1 Effectiveness as a Teacher or Librarian:**

Effectiveness as a teacher or librarian is determined by a review of the following considerations:

- 1. The individual's knowledge of a subject field, including current developments in that field;**
- 2. An ability to organize and effectively present course work in both an oral and written manner;**
- 3. Demonstrated ability to motivate students' interest and participation; and**
- 4. An active concern for students' academic progress.**

### **5.2.2 Effectiveness in Scholarship and Other Creative Activities:**

Although scholarly work takes many forms, a faculty member's effectiveness can be demonstrated by such achievements as publications, fine arts creations, personal presentation of formal papers, artistic performances and the like. The quality of the individual's scholarly approach, capacity for independent thought, originality, and quality of research shall be evaluated. The faculty member should delineate at the time for evaluation those works and activities which have been produced during his academic career or the period in question. When feasible, opinions concerning scholarly output or potential should be solicited from outside of the university as well as from colleagues within the institution.

### **5.2.3 Effectiveness in Service Activities:**

Service functions may be those performed for the university or those

making faculty expertise available for public service, including faculty consultation within or outside the university. Service may include such activities as delivery of professional services, participation in departmental as well as university-wide committee work, fulfillment of administrative assignments, and contributions to the improvement of student and faculty life. Service may involve the Alcorn State University community, State of Mississippi or be at the national or international levels.

**5.2.4 Effectiveness in Oral and Written Communication in the English Language:**

As a part of the interview process, all prospective faculty must present a seminar or lecture to the faculty, staff, students and interested persons of the department. The prospective faculty must also submit a written copy of the presentation to the department chairperson.

**5.3 DEFINITION OF FACULTY STATUS:**

All statements concerning terms of appointment refer to full-time, primary faculty appointments, except where otherwise noted. The following faculty ranks are employed throughout the university:

**5.3.1 Instructor:**

Employment as an instructor calls for the master's degree in the subject field or a master's degree and 18 graduate semester hours in the subject field. However, experience and a baccalaureate degree may be measured and can be used to meet the eligibility requirements of appointment. In some instances, demonstrated technical proficiency and experience may serve in lieu of formal training.

**5.3.2 Assistant Professor:**

The appropriate terminal degree is required for this rank, but an assistant professorship may be awarded in the absence of the degree to individuals who have made significant teaching, research or service contributions and who have shown evidence of academic potential. Appointments to the rank of assistant professor normally will require that the person will have served in the rank of instructor for at least four years.

**5.3.3 Associate Professor:**

This rank requires the terminal degree and service as an assistant professor for at least five years at this university or equivalent acceptable service elsewhere, with a minimum of nine years of teaching, service and/or productive research experience, five of which must have been at the college level.

#### **5.3.4 Professor:**

This position is the highest academic rank at the university. Ordinarily, it requires fifteen years of teaching, research and service, ten years of which must be at the college level with a minimum of six years at the associate professor rank.

#### **5.3.5 Other Titles:**

Other titles may be used to designate ad hoc appointments for special purposes or limited periods of time. Persons holding such appointments are without eligibility for tenure or sabbatical leave unless specifically delineated as having such.

#### **5.3.6 Level of Commitment in Above Ranks:**

All faculty ranks included in Sections 5.3.1 through 5.3.4 are considered to reflect the faculty member's commitment to university work. Affiliation with the university is established through a primary faculty appointment in an academic department or other academic unit most appropriate to the faculty member's interest and competence. As outlined in Section 5.1, only primary faculty appointments establish tenure in the department to which the faculty is assigned at the time of tenure. In addition to a primary faculty appointment, a secondary faculty appointment, usually at the same or lower rank, may be conferred in another department of the university as recognition of a specified teaching, research or service responsibility of the faculty member.

A faculty appointment may be designated part-time for an individual contributing fewer hours per semester or per year than is the school requirement for full-time faculty. The normal load for undergraduate faculty is 12 semester hours and for graduate faculty the equivalent of 9 semester hours when such is made up of lecture courses. Where laboratory and skill courses are involved in determining the teaching load, two clock hours of laboratory or skill instruction equal one clock hour of lecture time. Department chairpersons shall normally teach six semester hours each semester. The normal teaching load for deans shall be three hours.

The term visiting or temporary may be added to any faculty rank to denote a person bringing expertise to the institution on a part-time or limited full-time basis without a primary affiliation to this university. Adjunct may be added to any faculty rank conferred on a part-time basis. The adjunct designation is used for those persons of high professional caliber who make substantial contributions to programs within the university. Faculty members with this additional definition of title are not eligible for award of tenure.

#### **5.3.7 Eligibility Requirements for Graduate Faculty:**

Personnel providing graduate instruction are selected from the several areas offering graduate work. Members of the graduate faculty are recommended by their respective departments, and reviewed and approved by the

## **Graduate Council.**

1. Those members of the faculty who are distinguished by their scholarly attainment and competence, as measured by degrees, honors and scholarly production, will be eligible for membership in the graduate faculty.

2. Departmental faculty members holding the rank of associate and full professors are automatically approved as graduate faculty, for both on and off campus courses, if approved by their department in their area of speciality. Once approved by the Council, these faculty members may be used on a continuous basis in their area of specialty by the department offering graduate work.

3. In general, the terminal degree or its equivalent, and a rank of assistant professor are the minimum requirements for membership in the graduate faculty. All other departmental recommendations must have specific, detailed justification and the individual approval of the Graduate Council.

### **5.3.8 Salary Arrangements:**

The university does not adhere to fixed salary scales. Salaries are reviewed on an annual basis and increases, if any, are provided from funds appropriated by the state Legislature. When salary increases are available, the amount of an individual's salary increase reflects recognition of evaluated individual merit, productivity and market. It is expected that a general salary range will be created for each rank within each discipline employed by the university. Faculty members will be paid an amount within this range.

## **5.4 PROCEDURES FOR APPOINTMENT:**

Recommendations for appointment to a faculty position normally originate at the departmental level and are forwarded to the appropriate vice president's office. The dean evaluates the recommendation based upon the material in the candidate's folder. The dean may also seek supplemental information. The dean then forwards the recommendation (whether positive or negative) to the Vice President for Academic Affairs. Upon review and approval by the President, all appointments to the faculty are referred to the Board of Trustees for final approval.

### **5.4.1 Initial and Probationary Appointments:**

The terms and conditions of every appointment to the faculty will be stated or confirmed in writing, and a copy of the appointment will be supplied to the faculty member. Any subsequent extensions or modifications to an appointment, any special understandings or any notices incumbent on either the university or the faculty member, will be stated or confirmed in writing and a copy will be given to the faculty member at the time of appointment.

With the exception of special appointments clearly limited to brief association with the university and reappointments of retired faculty members under special conditions, all full-time appointments to the rank of instructor or higher are

to two kinds: (1) probationary appointments and (2) appointments with continuous tenure.

#### **5.4.2 Tenured Appointments:**

The regular faculty of the university consists of all persons appointed to the full-time faculty in the ranks of instructor, assistant professor, associate professor, and professor. The regular faculty either hold or have the potential to hold tenure as assistant professors, associate professors or professors, unless their appointments are specified otherwise. Instructors cannot be tenured. Those part-time, temporary, visiting, adjunct, non-tenure-earning appointments or other ad hoc appointments do not hold appointments potentially earning tenure. The phrase "appointment to a tenure-earning position" does not imply that such a person has tenure, but only that the appointment is subject to the rules of earning tenure as set forth in this document.

#### **5.4.3 Non-tenure Track Faculty:**

Universities are authorized by IHL Board Policy to establish professional positions designated as non-tenure track positions. Each institution shall prepare annually, along with its budget, a list of positions so designed for submission for approval by the Institutional Executive Officer (President). Subsequent requests for such designations submitted during the budget year must also be approved by the Institutional Executive Officer. Positions described as non-tenure track positions may be converted to the other type only with approval by the Institutional Executive Officer.

Non-tenure track faculty positions may be established for full-time professional faculty personnel employed in technical, special, career, research and public service programs or programs which are anticipated to have a limited lifespan or which are funded, fully or partially, through non-system sources. There shall be no maximum time limitation for service in positions in this category.

The following provisions shall apply to all non-tenure track personnel:

- 1. Individuals employed in non-tenure track positions shall not be eligible for consideration for the award of tenure. Individuals in non-tenure track positions may not have their status converted to tenure track positions. However, they are eligible to apply for tenure track positions.**
- 2. Individuals employed in non-tenure track positions may apply, on an equal basis with other candidates, for tenure track positions which may become available.**

#### **5.4.4 Employment of Relatives:**

No relative of an employee of Alcorn State University may be employed to work under the general or direct supervision of that employee unless

specific approval is granted by the President. No relative of a budget officer may be employed and paid from any funds over which that budget officer has control unless specific approval is granted by the President. The budget officer is required to reveal this information to the President before one of his relatives is interviewed.

#### **5.4.5 Summer Employment Policy:**

Summer school operates on a self-sustaining basis. The summer instructional program during the two summer sessions depends upon resources generated by student enrollments. It may not be possible for all nine-month faculty who wish to work in summer school to do so.

In departments where there are more faculty seeking summer employment than summer positions are available, assignments will be rotated in order to ensure that all faculty members teach at least one summer session if student load warrants. Consideration will also be given to normal teaching assignment, including areas of expertise in making summer school appointments. Within this framework, seniority will be given due consideration.

#### **5.5 REVIEW OF FACULTY MEMBERS:**

In order that appropriate recommendations can be made by the school deans, the chairperson of each department has the responsibility of maintaining an activity file for each faculty member of the department to be updated on the basis of information furnished by the faculty member at least once a year. Further, the school dean shall assist individual faculty members, especially those in probationary status, by reviewing their progress with them on a periodic basis.

### **5.5.1 Faculty Evaluation:**

It is Alcorn State University's policy to evaluate the effectiveness of all employees on an annual basis. The purposes of the evaluation are: (a) to serve as the basis for administrative recommendations such as salary, merit pay\*, rank, promotion, and tenure; and (b) to support the improvement of individual performance. Written evaluations will be provided and the employee being evaluated will have an opportunity to discuss the evaluation with his/her supervisor before recommendations based upon it are forwarded. The evaluation shall follow written procedures which may be revised at any time provided that those affected are consulted; formal consideration of revisions must occur at least once every three years. Major changes, if needed, are normally made at the beginning of the academic year. The applicable departmental chairperson should assist individual faculty members--especially those in a probationary status--by reviewing their progress with them on a periodic basis.

### **5.6 TENURE POLICY:**

For any faculty member appointed to a potentially tenure-earning position, the non-tenure probationary period shall not exceed a total of seven (7) years in this university. If tenure has not been awarded by the end of the sixth (6th) year of service to the university, appointment for additional years shall be temporary, annual appointments. An individual not being reappointed shall be notified in writing at least twelve (12) months prior to the date on which the appointment is to end. Faculty members should be informed of the reasons for non-reappointments upon request by them (see also Section 5.8.4).

Instructors appointed without restriction shall be appointed initially for at least a one-year period, renewable through procedures stated in Section 5.7. Instructors are not granted tenure.

### **5.7 PROCEDURES AND CRITERIA FOR PROMOTION AND TENURE:**

Promotion to the several professorial ranks indicates a faculty member's accomplishment of university and professional goals. Tenure reflects the principle of assuring a faculty member the security of appointment within the university on the basis of demonstrated capabilities and the promise of continuing intellectual development. It is achieved through a guarantee by the university that the person will be given continuing appointments at least at the same faculty rank. Promotion of a tenured faculty member indicates continuation of tenure at the new rank. The services

---

\*To evaluate university personnel, an evaluation scale of Poor (Unsatisfactory), Fair (Barely Satisfactory), Good (Satisfactory), Very Good or Outstanding may be considered for merit pay. Each year the percentage of funds available for merit pay will be determined by the administration. Percentage of merit pay for each individual will be based on performance in teaching, research and public service activities. All of the above is predicated by the allocations and

directives from the Board.

of a faculty member with tenure shall be terminated only for adequate cause, including cases of financial exigency at the university.

The awarding of tenure is a serious and significant step for both the faculty member and the university. Tenure is not awarded merely on the basis of time in service. Tenure should be regarded as a most valuable possession signifying a long-term commitment of resources by the university, matched by the sincere commitment of the faculty member to continue professional growth and achievement.

In granting tenure to a faculty member, academic qualifications are to be considered, especially with regards to the excellence of attainment in teaching, research and service. There should be demonstrable excellence in two of these. Judgments relative to these qualifications should be rendered by the appropriate faculty committee at the departmental level. Department chairpersons, school deans and the Vice President for Academic Affairs may seek review by knowledgeable persons outside the university. Further, priorities and needs of the academic program of the department should be considered in recommending each award of tenure.

In addition to academic qualifications, eligibility to apply for promotion to the several professorial ranks is based on specific criteria which relate to experience and minimum time in rank. These criteria are:

**Assistant Professor:**

Promotion to the rank of assistant professor normally will require that the person will have served in the rank of instructor for at least four (4) years.

**Associate Professor:**

Promotion to the rank of associate professor requires at least five years in the rank of assistant professor at this university, or equivalent acceptable service elsewhere, with a minimum of nine (9) years of teaching, service and/or productive research experience, five (5) of which must have been at the college level.

**Professor:**

Ordinarily, the rank of professor requires fifteen (15) years of teaching, research and service, ten (10) years of which must be at the college level with a minimum of six (6) years at the associate professor rank.

#### **5.7.1 Responsibility of Department/School:**

The procedures for promotion and/or award of tenure originate at the departmental level with the individual concerned. Data for the application should be gathered and presented to the chairperson of the department. Each department shall have a promotion and tenure committee, composed of three tenured faculty members who review applications and make recommendations to the department chairperson. Departments which do not have three tenured faculty may choose a member from another department to serve on the committee or may use senior faculty members in the department. The application, departmental committee's and department chairperson's recommendations are sent simultaneously to the dean for review and recommendation. The dean forwards these documents, along with his/her recommendation, to the Vice President of Academic Affairs.

#### **5.7.2 Responsibility of Promotion, Rank and Tenure Committee:**

Consideration for promotion or award of tenure shall be referred to the Promotion, Rank and Tenure Committee by the Vice President for Academic Affairs. The committee shall elect a presiding chairman and may elect, if it desires, other members from the committee (comprising an executive group) to meet regularly with the Vice President to present recommendations and to discuss faculty matters. This committee is charged by university policies and regulations with advising the Vice President on promotion and tenure matters.

#### **5.7.3 Responsibility of the Vice President for Academic Affairs:**

All faculty appointments and changes in status require concurrence and recommendation of the Vice President for Academic Affairs. It is the Vice President's responsibility, upon receiving a departmental recommendation for or against appointment or reappointment, to determine that adequate evaluation of the recommended action has been made.

#### **5.7.4 Approval of the President:**

The President shall review and approve or disapprove all appointments, promotions and awards of tenure. The President shall fulfill the institution's responsibility to the Board of Trustees. All appointments, reappointments, promotions and tenure are established only by a written notification of appointment issued to the faculty member by the president of the university. Conditions of each appointment are made in attachments to the written notice of appointment issued to the individual concerned.

**5.7.5 Board of Trustees Action:**

The President shall confer with the Board of Trustees, who shall exercise final approval on all appointments, reappointments, promotions and awards of tenure that have been recommended by the President. Upon approval by the Board, notification of approval is sent back to the Office of the President of the institution where subsequent announcements are made. Tenure of faculty is to the department of the faculty member.

**5.7.6 Notification of Action to Faculty Member:**

Notification to faculty members concerning promotion and/or tenure shall be made by March 1 of each year. Appropriate review schedules have been established by the Promotion, Rank and Tenure Committee to provide adequate time for full consideration, including action by the President. Each involved faculty member shall receive prompt advance notification prior to the release of public information concerning promotion or tenure.

**5.8 NON-REAPPOINTMENT, RESIGNATION AND DISMISSAL:**

**5.8.1 Notice of Non-Renewal or Termination of Non-Tenured Personnel:**

1. Notice of intention not to renew non-tenure track personnel shall be furnished in writing thirty (30) days prior to the expiration date of the contract.
2. Lack of funds—Notice of termination of non-tenure track personnel prior to expiration of the contract due to a lack of funds shall be furnished in writing thirty (30) days prior to the termination.

**5.8.2 Resignation:**

Acceptance of a full-time faculty appointment is a commitment to the scheduled academic year and, for administrative personnel, to a full fiscal year. When circumstances do not permit the completion of such a commitment, the university may agree to a resignation with at least three months written notice given the departmental chairperson/dean. Unless emergency conditions exist, the faculty member is expected to carry out the terms of his/her contract. A faculty member may terminate his/her appointment under normal conditions effective at the end of an academic year, provided he/she gives notice in writing at the earliest possible convenience, but not later than May 15 or ten (10) days following issuance of his/her contract for the coming year, whichever date occurs later.

### **5.8.3 Dismissal:**

Dismissal of a faculty member from an academic position is a most serious matter and requires action by the President. Dismissal is applicable to both tenured and non-tenured faculty members and differs from non-reappointments in that dismissals may occur at any time; it requires a special kind of action; it is based upon such causes as wrong doing or incompetence. In those instances where a departmental chairperson/dean or the vice president believes a faculty member's continued appointment is not in the best interest of the university, the first step is the preferring of charges. A faculty member shall be given a hearing before a faculty committee convened by the President. The faculty member shall be informed, in writing, of the charges before the hearing is conducted and shall be permitted to choose an advisor who may act as counsel. The hearing shall be conducted in accordance with established written procedures for such hearings as set forth in Appendix A of this handbook. A record of the hearing will be made.

Until the final decision on the matter has been reached, the faculty member shall not be suspended unless immediate harm to himself/herself, to others, or to the university is threatened by continuance. Salary shall continue during the period of suspension. Suspension can be effected only by the President.

A written report of the hearing before the above committee, including findings of facts and specific recommendations for or against dismissal as well as other possible sanctions such as demotion or suspension, shall be transmitted to the President. Final decision in the matter rests with the President and the university Board of Trustees.

### **5.8.4 Termination of Tenured Faculty:**

Termination of service of a person with continuing employment is made only under extraordinary circumstances as follows:

1. Financial exigencies (lack of adequate finance);
2. Termination of programs, academic or administrative units;
3. Malfeasance, inefficiency or contumacious conduct; and
4. For cause.

Termination for cause of a continuous appointment or the dismissal for cause of a teacher previous to the expiration of a term appointment shall not be recommended by the executive officer of the institution without submitting the recommendation of the tenure committee. If requested, the administration of the institution shall arrange a hearing. In all cases, the accused faculty member, at least twenty (20) workdays before the hearing, shall be informed in writing of the charges against him and shall have the opportunity to be heard in his/her own defense. He/she shall be permitted to have with him/her an advisor of his/her own choosing

who may act as counsel. There shall be a full stenographic record of the hearing available to the parties concerned. In the hearing of charges of incompetency, the testimony shall include that of faculty and other scholars. Faculty on continuous appointment, who are dismissed for reasons stated on page 69 (E) (of the board handbook), shall be paid only through the term of their current contract; however, at the discretion of the institution and the Board of Trustees, the faculty member's salary may be paid, and he may be relieved of teaching duties.

#### **5.8.5 Termination Due to Financial Exigency:**

Tenured faculty members' appointments may be terminated with one year's notice because of a financial exigency. A drop in overall enrollment or a drop in enrollment in a specific department may be the basis for financial exigency. The appointment of non-tenured faculty members may be terminated prior to the end of a previously agreed upon period of appointment in the same manner. Should such a matter arise, the terminated faculty member is entitled to a hearing, if he or she so requests, conducted in accordance with the procedures described in Appendix C of this handbook.

#### **5.8.6 Termination Due to Loss of Project Funds:**

If a faculty member is hired on federal, foundation and/or other temporary grant funds, that faculty member's appointment ends at the university when the grant expires.

### **5.9 GRIEVANCES:**

A faculty member with a grievance in any matter other than dismissal proceedings (Section 5.8.3) should seek solution to the problem through the department chairperson, dean and vice president, making use of available procedures provided by the policies and regulations available in this handbook. If unable to obtain a satisfactory resolution, the faculty member may then request that the academic dean convene a committee to consider the complaint as set out in the written grievance procedures (Appendix B of this handbook).

**FACULTY ROLES AND RESPONSIBILITIES****6.1 ACADEMIC FREEDOM:**

The university can fulfill its mission only when its faculty members have academic freedom; that is, freedom to pursue the truth without fear of pressure from sources inside or outside the institution. It is the policy of Alcorn State University to defend academic freedom by resisting all efforts, from whatever source, to encroach or restrict it. The university, therefore, adopts the following statements concerning academic freedom:

1. Faculty members are entitled to full freedom in research and in the publication of the results when the above does not conflict with the adequate performance of their other academic duties, but research for pecuniary returns should be based upon an understanding with the authorities or the administration of the university.
2. Faculty members are entitled to freedom in the classroom in discussion of their subject, but they should be careful not to introduce into their teaching controversial matters which have no relation to their subject. Limitations of academic freedom because of religious or other aims of the institution should be clearly stated at the time of appointment.
3. The college or university teacher is a citizen, a member of a learned profession, and an officer of an educational institution. When teachers speak or write as a citizens, they should be free from institutional censorship or discipline; but their special position in the community imposes special obligations. As a person of learning and an educational officer, a teacher should remember that the public may judge a teacher's profession and institution by said teacher's utterances. Hence, they should at all times be accurate, should exercise appropriate restraint, should show respect for the opinions of others and should make every effort to indicate that they are not institutional spokespersons.

## **6.2 POLITICAL ACTIVITY:**

**Any faculty member may support any political candidate, entity, campaign, program or action so long as it is made clear that the stance is personal rather than reflecting the university's policy. No member of the faculty, staff or student body of the university shall be expected to engage in political activity except on a voluntary basis.**

**The exact language of the policy of the Board of Trustees of State Institutions of Higher Learning about political activities is as follows:**

**Participation by employees of the several institutions of higher learning in various community and public affairs is expected; however, it is expected that time given to such activities will not interfere with the regular duties of the employees. Political activities by an employee will not be prohibited at such times as the employee would not be ordinarily required to render services to the institution or if the employee elects to take and the institution grants a leave of absence without pay.**

## **6.3 POLICY ON OUTSIDE EMPLOYMENT, CONSULTING AND CONFLICT OF INTEREST:**

### **6.3.1 Outside Employment:**

**The following policy is contained in the By-laws and Policies of the Board of Trustees of State Institutions of Higher Learning pertaining to outside employment:**

**Members of the faculty and staff are permitted to engage in outside employment, provided permission is first obtained from the executive officer of the institution concerned, and provided further that the executive officer of the institution concerned shall grant permission to engage in outside employment only after having first determined that the said outside employment will interfere in no way with the institutional duties of the individual requesting such permission.**

**In addition, such individuals will not engage in a business or profession that would in any manner compete with a similar business or profession over which he or she would have direct supervision, inspection, or purchasing authority within the university or agency, such being a conflict of interest.**

**In keeping with this policy, any faculty member wishing to engage in outside employment must secure the written permission of the president of the**

university.

### **6.3.2 Consulting and Conflict of Interest:**

The use or orientation of any research effort to serve the needs of an individual, group, firm, corporation or other organization or entity without the proper disclosure of such use of orientation to the sponsoring agency and to the university constitutes a serious breach of confidence. Furthermore, there should be no purchase by an employee of any major equipment, instrument, materials or other items for use in university research efforts from a corporation, company, firm or organization in which the member has a pecuniary interest without obtaining the approval from the university in advance.

It is incumbent upon each individual faculty member who participates in outside consulting activity to review outside consulting assignments continuously to avoid participating in any which would concurrently or, in the future, constitute a conflict of interest or the appearance of a conflict of interest. When a potential conflict of interest arises, it is expected that the faculty member, with the assistance of the departmental chairperson, school dean, the Vice President for Academic Affairs, and others as necessary will act to preclude or remove the conflict.

When a faculty member is engaged in a government-sponsored research program and concurrently serves as a consultant to one or more governmental contractors or prospective governmental contractors in the same technical field as the research project, particular care must be taken (a) to avoid giving advice which might be of questionable objectivity because of the possible bearing on other interests; (b) in undertaking and performing consultant services, to make full disclosure of such interests to the university and to the contractor insofar as they may appear to relate to the work of the university or the contractor.

Many conflict of interest situations may arise, both obvious and subtle, in such variety that they cannot adequately be presented in this document. The Council on American Association of University Professors and the American Council on Education, working in cooperation with the President's Science Advisor and the Federal Council of Science Technology in 1965, developed a statement of principles formulating basic standards and guidelines in this problem area. It behooves each faculty member planning to undertake government-sponsored research to study the statement in advance of making any formal agreement, as well as during the course of any such work. Copies of such statements are available in the Vice President for Academic Affairs' office and through the Office of the President.

### **6.4 RESPONSIBILITIES:**

Faculty members are expected to do the following as a condition of employment at Alcorn State University:

1. **Meet all scheduled classes on time;**
2. **Attend faculty meetings;**
3. **Maintain approved office hours for conferences and academic advisement;**
4. **Properly maintain the roll book and call the roll at each class meeting;**
5. **Fulfill commitments to research and public service projects;**
6. **Attend special university functions (including commencement) which may be announced from time to time;**
7. **Serve on various committees to which they are assigned; and**
8. **Administer examinations as scheduled by the Vice President for Academic Affairs.**

#### **6.5 WORK LOAD:**

**Faculty loads reflect differences in assignments for teaching undergraduate classes, advising, directing seminars, supervising clinical experiences, and directing theses. The normal teaching load is twelve (12) semester hours per term at the undergraduate level, and nine (9) hours at the graduate level. Although the university tries to adhere to this load policy, a few faculty members may, on occasion, be called upon to teach fifteen (15) undergraduate hours because of limited number of teachers available within their area. Where laboratory and skill courses are involved in determining the teaching load, two clock hours of laboratory or skill instruction equal one clock hour of lecture time.**

**Departmental chairpersons shall normally teach six (6) semester hours each semester. The normal teaching load for deans shall be three (3) semester hours.**

## VII

### EXTERNALLY FUNDED GRANTS AND CONTRACTS POLICY

The administration and financial management of all externally funded grants and contracts at Alcorn State University comply with the regulations of the Office of Management and Budget as stipulated in the Education Division General Administrative Regulations (EDGAR) and all other applicable state and federal regulations. Of particular importance to the administration of federally funded grants and contracts is Circular No. 1-21--Principles for Determining Costs Applicable to Grants, Contracts, and other Agreements with Educational Institutions.

Alcorn State University is primarily a teaching institution; however, the university conducts a considerable amount of research primarily in agriculture and agriculturally related areas.

It is the policy of Alcorn State University to encourage, facilitate and promote the involvement of faculty and staff members in conducting research which may contribute to their professional growth, improve their instructional activities, advance knowledge and/or contribute to the university's public services to the community. Toward this end, the university encourages faculty and staff members to seek external funding to supplement institutional funds.

It is the policy of Alcorn State University that no full-time faculty member shall devote more than 75 percent time to externally funded research during the regular academic year. A faculty member is prohibited from overextending himself or herself in the pursuit of externally funded grants and contracts to the detriment of his/her teaching, advisement, committee assignments and other responsibilities. Consequently, faculty members must obtain the approval of the department chairperson, school dean and Vice President for Academic Affairs in order to be engaged in externally funded research. The university president retains the right to approve all externally funded projects conducted at the university to prevent undue interference, internal and external, with researchers' freedom to investigate and report their findings.

Faculty members engaged in externally funded research may be released from all teaching responsibilities during the summer to conduct full-time research.

It is the policy of the university to ensure that the support of general university activities are not so dependent on externally funded grants and contracts as to endanger the operation of any area of the university if such external funds are discontinued. Externally funded grants and contracts and any indirect cost derived therefrom will supplement and not supplant state funding.

Externally funded grants and contracts and any indirect cost derived

therefrom will supplement and not supplant state funding.

Faculty members who are engaged in externally funded research and/or public service activities during the regular academic year may be compensated from the external grant or contract at the same rate as the normal salary and prorated according to the proportion of time devoted to the externally funded activity.

Faculty members engaged in externally funded research and/or public service activities may be released from teaching responsibilities during the summer to conduct full-time research and/or public service. Such faculty may be paid 100 percent from the external funding or in proportion to the amount of time devoted to the externally funded activity. The rate of pay shall be based on the faculty salary for the coming (next) academic year. Faculty members who are not employed by the university during the summer may seek and negotiate for external employment provided there is no conflict of interest with the faculty member's university's responsibilities.

#### **7.1 Sponsored Program Incentive Award Program:**

It is the policy of Alcorn State University to encourage, facilitate and promote the involvement of faculty and staff members in conducting research, public service and other scholarly activities which may contribute to their professional growth, improve their instructional activities, advance knowledge and/or contribute to the university's public services to the community. Toward this end, the university encourages faculty and staff members to seek external funding to supplement institutional funds.

The university has an incentive program designed to encourage and assist faculty and staff members to 1) seek external funding, 2) conduct research, 3) publish, and 4) provide community services.

A special award may be made to faculty/staff members whose contribution in areas of grantsmanship, research, and/or public service are outstanding (exceed normal expectation). Detailed information regarding the incentive program may be obtained from the Office of Sponsored Programs, Office of Academic Affairs and from department chairs and deans.

## **VIII**

### **INSURANCE, RETIREMENT AND BENEFITS**

Alcorn State University provides fringe benefits to its faculty and staff on an amount within its financial capability. Benefits are purchased in such a way as to

provide the best possible coverage for the least cost. Information concerning the retirement and insurance programs is available through the various pamphlets, certificates, policies, and an explanation available through the Personnel Office.

## **8.1 INSURANCE PROGRAMS:**

Alcorn State University has made available to employees a program of group life, accidental death and dismemberment insurance benefits. All university employees who are paid by or through Alcorn State University and who, in accordance with the policies and regulations established by the university, have been classified as faculty or staff are eligible. The amount of life insurance coverage for eligible employees is based on salary level, with the university paying 50 percent (50%) of the premium and the individual paying the remaining 50 percent (50%).

In addition, the university provides a group health insurance program which is available for full-time, regular faculty members of Alcorn State University. There is no cost to the employee. However, the employee is responsible for any dependent coverage.

## **8.2 RETIREMENT PLANS:**

All eligible faculty Alcorn State University are required by state law to become members of either the Public Employees' Retirement System (PERS) or participate in the Optional Retirement Plan (ORP), as a condition of their employment.

### **8.2.1. PUBLIC EMPLOYEES' RETIREMENT SYSTEM OF MISSISSIPPI (PERS):**

All eligible faculty of Alcorn State University are required by state law to become members of either the Public Employees' Retirement System of Mississippi (PERS) or participate in the Optional Retirement Plan (ORP). Members contribute 7.25% of their salary to the Plan and the University contributes 9.75% of the member's salary to the Plan.

Service retirement benefits are available to members who terminate covered employment, meet the minimum eligibility requirements, and submit a completed application to PERS. Any PERS member who is age 60 or older with at least 4 years of membership service in PERS, regardless of age, who has at least 25 years of creditable service is eligible to apply for service retirement benefits.

Disability benefits are designed to provide a secure income to active members who become sick or injured, can no longer perform the essential duties of the job, and have a condition this is likely to be permanent.

### **8.2.1 Optional Retirement Plan:**

Effective July 1, 1990, the Optional Retirement Plan (ORP) was made available to eligible members of the faculty. In July/August 1998, the Board of Trustees amended the eligibility criteria for participation in the ORP. The amendment allowed newly hired librarians with academic rank, intercollegiate coaches with or without academic rank, and administrators with budgetary authority to be considered as part of the “teaching and administrative faculty” and thus eligible for participation in the ORP.

The participant and the University contribute the same percentage of the participant’s salary to the Plan that is contributed to PERS – 7.25% and 9.75%, respectively. However, 2.50% of the University’s contribution goes to PERS to fund the unfunded accrued liability of PERS.

The OPR account is immediately 100% vested. These funds may be transferable to other eligible plans, in the event the participant relocates to another employer. The participant chooses the investment vehicles in which his/her contributions are deposited and can make limited transfers of the account based on the annuity contract with the vendors.

### **8.3 WORKER'S COMPENSATION:**

The university maintains standard worker's compensation insurance coverage in accordance with Mississippi state laws which, in general, prescribe the amounts of indemnity payable for the degrees of disability, temporary or permanent, and for death if the injury or disability occurs on the job. These laws also provide for medical care, hospitalization, and weekly compensation for the period of disability. All injuries should be reported immediately to the Personnel Office. Fraudulent claims on worker's compensation may lead to dismissal.

Each supervisor is required to file a written report in the Office of Personnel giving the location, time, date, cause and witnesses, if possible, to each accident.

## IX

### COMPENSATION AND PAYROLL DEDUCTIONS

**Alcorn State University employees are generally paid as follows:**

**Those employees who are paid on a salary basis are usually paid once a month on the last day of the month, except when the month ends on Saturday or Sunday, at which time payday is the last workday of the month. At the close of the first semester, if state funds are available, employees are paid before Christmas holidays begin. The university has no obligation to pay before this day. At the end of the second semester, employees who are on nine-month contracts are paid on the last day of their contract, provided all student grades have been turned in to the Registrar's Office and all other requirements of the position have been completed as required by the Vice President for Academic Affairs. Under no circumstances will checks be issued until these obligations are met. Each faculty member must complete a monthly leave summary form before this check can be issued.**

**With the exception of department chairpersons, teaching appointments for the two summer sessions are by invitation only, unless a member is employed under a 12-month contract. In all instances of summer appointments, the needs of the students and those of the university are of primary concern. The salary rate for each summer term of full-time teaching equals one-ninth (1/9) of the teacher's previous nine-month contracted salary. Faculty members accepting a one-course, summer session teaching assignment will be compensated at the rate of one-eighteenth (1/18) of their previous yearly salary.**

**The university has no obligation to provide summer employment for its faculty. The university reserves the right to bring in outside persons to meet its faculty needs.**

**Faculty members not on 12-month contracts are paid for the summer session at the end of the session in which they work.**

**The following deductions are normally made from all payroll checks issued by Alcorn State University:**

- 1. FICA (Social Security);**
- 2. Federal income tax;**
- 3. State income tax;**
- 4. State retirement**

## TRAVEL POLICIES

### 10.1 GENERAL:

The university encourages faculty and staff travel to professional, educational and scientific meetings, conferences and workshops for the purpose of professional growth and development which will be of benefit to both the individual and the university.

Official university travel is governed by state law, board policy, and university budgetary considerations.

Travel outside the continental United States must be approved by the Board of Trustees sixty (60) days prior to the trip. Such travel, when funded from current general funds, must also be approved by the Governor and the Fiscal Management Board.

### 10.2 TRAVEL PROCEDURES:

1. Travel requests must be submitted to the appropriate department head/dean and/or Vice President for Academic Affairs for approval.
2. Once a travel request has been approved by the Office of Business Affairs, the Office of Academic Affairs must call the state travel agent to make specific arrangements for the proposed trip.
3. Once the Office of Business Affairs has approved the travel and the copy of the travel request is received by the applicant, the faculty or staff in the academic area should call the Office of the Vice President for Academic Affairs so that arrangements can be made to charge tickets to an air travel card. All persons in the professional staff area should contact the Office of Business Affairs to make arrangements for tickets to be charged to an air travel card.
4. Travelers have the options of having tickets mailed prior to traveling, or tickets can be picked up at the airport. The preference of the traveler should be made known to the secretary to the Vice President for Academic Affairs or the Vice President for Business Affairs, whichever area--academic or professional staff--is applicable.

### **10.3 REGULATIONS:**

- 1. Travel allowances are based on current state law. Travel by private automobile will be reimbursed at the prevailing state rate per mile for each mile actually and necessarily traveled. A public carrier should normally be used for travel to a distant city. When a private vehicle is used, reimbursement will be made on the tourist air fare or automobile mileage to the place traveled, whichever is the lower.**
- 2. When more than one person from the university is attending the same meeting or function for which reimbursement of travel expenses will be sought, said individuals are required to travel together when such travel is by private vehicle.**
- 3. Ground transportation from the airport to a hotel or place of meeting must be on a bus or in a limousine provided for such purposes at the airport. Taxis must not be used for such transportation unless bus or limousine service is not available at the airport. Expenses for ground transportation must be supported by receipts.**
- 4. Receipts must be presented for train, airplane, or bus fares, parking lot charges, registration fees, and any items of an unusual nature. The nature of long-distance telephone calls must be explained to show party called and purpose.**
- 5. All air travel must be tourist class. In the event that tourist class is not available, a statement from the airline making such certification is required.**
- 6. Expenses incurred for lodging must be supported by a receipt. An itemized breakdown of the room and tax amounts must be shown on the hotel receipt. University representatives are urged to secure the most economical accommodations feasible. Educational rates should be requested when making hotel/motel reservations.**
- 7. Reimbursement for meals may not exceed the prevailing state rates for in-state or out-of-state or applicable high-cost areas. The Office of Business Affairs shall disseminate information on prevailing rates.**
- 8. A detailed report of travel to conventions and/or professional meetings should be made to the department chairperson, deans, vice president and the president of the university.**

9. All travel requests must have the approval of the school or administrative head before any trips are made. All travel requests must be received and approved at least two days in advance in the Office of Business Affairs before any trips are made. Travel submitted for approval and payment after a trip has been made may be denied.
10. If circumstances of an emergency nature arise that will not allow ample time for approval of the trip before the trip is made, a written, detailed explanation must be given stating reason(s) the trip was not approved prior to the travel date before reimbursement can be made.
11. All reimbursement forms must be itemized by each person traveling.
12. Receipts must be submitted for the following:
  - a. Hotel (after checking out)
  - b. Taxi, bus or limousine
  - c. Parking (hotel or airport)
  - d. Meals for high cost cities when claiming above per diem
  - e. Gas receipts for university vehicles (include tag number, date of tag number, date of trip and store name)
13. All receipts must be originals and unaltered.
14. No reimbursement will be made for anyone other than the person traveling.

#### **10.4 TRAVEL ADVANCE:**

The university has made it possible for eligible employees who earn \$15,000 or more to obtain a corporate travel card at no monthly charge to the employee. The use of the travel card eliminates, to a significant extent, the need for travel advances.

It is the policy of Alcorn State University that the university shall not provide advanced travel funds for its employees except in cases of group travel involving students.

**10.5 APPROVAL FOR TRAVEL ABROAD FOR WHICH REIMBURSEMENT IS REQUESTED:**

- 1. Travel outside the continental United States for which reimbursement is required must be approved by the Board and meet the requirements as set forth by state statute.**
- 2. Request for travel outside the continental United States must be made by completing a Request for Approval for International Travel Form and submitted, through the normal university chain of command, to the university president.**
- 3. Request for travel abroad, which is approved by the university president, is submitted to the Board of Trustees of Mississippi Institutions of Higher Learning for its action. The individual requesting authorization to travel outside the continental United States will be notified by the President's Office as to the final disposition of the request.**

HOLIDAYS, VACATIONS AND LEAVES

11.1 HOLIDAYS:

The official holidays of Alcorn State University are as follows:

<u>HOLIDAY</u>	<u>DAYS</u>
New Year's Day .....	1
Martin Luther King, Jr.'s Birthday .....	1
Good Friday .....	1
Spring Break .....	2*
Memorial Day .....	1
Independence Day .....	1
Labor Day .....	1
Thanksgiving .....	2
Christmas .....	5

Special holidays may be announced by the President from time to time.

When a holiday falls on Saturday or Sunday, it will be observed the following Monday or another day designated by the university. It is understood that essential services of the university must be provided at all times, thus compensatory time off will be given faculty members who are required to work on official university holidays.

To qualify for a paid holiday, it is necessary to work both the working day before and after the holiday occurs. The working day before and after the holiday will be defined as the regularly scheduled working day for each employee's job.

11.2 VACATION POLICY:

11.2.1 Twelve-Month Employees:

All twelve-month employees of Alcorn State University, upon completion of one month of continuous service and who are full-time regular employees, shall be allowed credit for personal leave as follows:

---

\*To be announced by the President.

<b>CONTINUOUS SERVICE</b>	<b>ACCRUAL RATE (Monthly)</b>	<b>ACCRUAL RATE (Annually)</b>
<b>1 month to 3 years</b>	<b>12 hours per month</b>	<b>18 days per year</b>
<b>37 months to 8 years</b>	<b>14 hours per month</b>	<b>21 days per year</b>
<b>97 months to 15 years</b>	<b>16 hours per month</b>	<b>24 days per year</b>
<b>Over 15 years</b>	<b>18 hours per month</b>	<b>27 days per year</b>

For the purpose of computing credit for personal leave, each employee shall be considered to work not more than five (5) days each week. Leaves of absence granted by Alcorn State University for one year or less shall be permitted without forfeiting accumulated continuous service. The provision of this policy shall not apply to military leaves of absence. The time for taking personal leave, except when such leave is taken due to an illness, shall be jointly determined by Alcorn State University and the employee. All employees are encouraged to use earned personal leave. An official vacation period shall be announced each year by the institution. Vacations must be taken at a time mutually agreeable to the immediate supervisor and the employer.

The earned personal leave of each employee shall be credited monthly after the completion of each month of service. Alcorn State University will not grant personal leave in an amount greater than was earned and accumulated by the employee.

Personal leave may be used for vacations and personal business as scheduled by Alcorn State University and shall be used for illnesses of the employee requiring an absence of one (1) day or less. Personal leave shall be used for the first day of an employee's illness requiring his/her absence of more than one (1) day.

There shall be no limit to the accumulation of personal leave. Upon termination of employment, each employee shall be paid for not more than thirty (30) days of accumulated personal leave. Unused personal leave in excess of thirty (30) days shall be counted as creditable service for the purposes of the retirement system.

Alcorn State University shall maintain proper leave records and shall keep the employee informed on a monthly basis as the employee's accumulated leave balances. For accounting purposes, an employee's anniversary date is the date of employment to full-time regular service.

Under no circumstances will an employee be paid for accrued personal leave time while still employed by Alcorn State University or any other agency of the State of Mississippi. When members transfer to other agencies of the state, all accrued personal leave shall be transferred. Alcorn State University shall furnish a statement of accrued leave at the time of transfer by an employee.

Should an employee die having accumulated personal leave as provided in this handbook, the wages or salary which would have been paid to such employee during their leave shall be paid to the person designated by such employee for this purpose or, in the absence of such designation, to the beneficiary of such employee as recorded with the Public Employees' Retirement System.

The foregoing vacation policy is in accordance with Section 25, Chapter 3 of the 1986 Cumulative Supplement to Mississippi Code 1972 Annotated, issued September, 1986.

**11.2.2 Nine-Month Employees:**

Employees on a nine-month appointment basis are granted no additional vacation beyond the holidays and vacations occurring during the academic year.

**11.3 MEDICAL LEAVE POLICY:**

**11.3.1 Twelve-Month Employees:**

All twelve-month employees of Alcorn State University, upon completion of one month of continuous service and who are full-time permanent employees, shall accrue credit for major medical leave as follows:

<b>CONTINUOUS SERVICE</b>	<b>ACCRUAL RATE (Monthly)</b>	<b>ACCRUAL RATE (Annually)</b>
<b>1 month to 3 years</b>	<b>8 hours per month</b>	<b>12 days per year</b>
<b>37 months to 8 years</b>	<b>7 hours per month</b>	<b>10.5 days per year</b>
<b>97 months to 15 years</b>	<b>6 hours per month</b>	<b>9 days per year</b>
<b>Over 15 years</b>	<b>5 hours per month</b>	<b>7.5 days per year</b>

There shall be no maximum limit to major medical leave accumulation. All unused major medical leave shall be counted as creditable service for the purpose of the retirement system.

Major medical leave may be used for the illness or injury of an employee only after the employee has used one (1) day of personal leave for each absence due to

illness, or leave without pay if the employee has no accrued personal leave. However, major medical leave may be used, without prior use of personal leave, to cover regularly scheduled visits to a doctor's office or a hospital for the continuing treatment of a chronic disease, as certified in advance by a medical doctor. For each absence due to illness of thirty-two (32) consecutive working hours (combined personal leave and major medical leave), major medical leave shall be authorized only when certified by a medical doctor.

In the event an employee is absent due to illness beyond the medical leave days earned, a pro rata deduction will be made from the employee's salary for the number of days in excess of the employee's accumulated medical leave days. For accounting purposes, an employee's anniversary date is the date of the employee's appointment to full-time regular or provisional service at Alcorn State University.

An employee may use up to three (3) days of earned major medical leave in any calendar year because of a death in the immediate family requiring the employee's absence from work. No qualifying time or use of personal leave will be required prior to use of major medical leave for this purpose. For the purpose of this section, the immediate family is defined as spouse, parent, stepparent, sibling, child, stepchild, grandchild, grandparent, son- or daughter-in-law, mother- or father-in-law, or brother- or sister-in-law.

At no time will an employee be paid for accrued medical leave while still employed at Alcorn State University except for medical leave pay, which may be made as heretofore provided. No payment will be made for accrued major medical leave except that of an employee who presents medical evidence that his physical condition is such that he can no longer work in any capacity may be paid for not more than one hundred twenty (120) days of earned major medical leave.

All accrued major medical leave shall be transferable between state agencies. Alcorn State University shall furnish a statement of accrued leave at the time of transfer by an employee.

#### **11.3.2 Nine-Month Employees:**

Nine-month employees are entitled to medical leave on a pro rata basis. All nine-month employees of Alcorn State University, upon completion of one month of continuous service and who are full-time regular employees, shall accrue credit for major medical leave as follows:

**Medical Leave (Sick) is Computed Per Academic Year as Follows:  
9-month Faculty Member**

<b>CONTINUOUS SERVICE</b>	<b>ACCRUAL RATE (Monthly)</b>	<b>ACCRUAL RATE (Annually)</b>
<b>1 month to 3 years</b>	<b>13 1/3 hrs.</b>	<b>15 days</b>
<b>37 months to 8 years</b>	<b>14 1/5 hrs.</b>	<b>16 days</b>
<b>97 months to 15 years</b>	<b>15 2/5 hrs.</b>	<b>17 days</b>
<b>Over 15 years</b>	<b>16 hrs.</b>	<b>18 days</b>

Medical leave will not be paid in excess of that accrued by the employee. In order to be eligible for allowance of paid medical leave, the employee must be ill, notify the department head immediately of the reason for absence, and keep the department head informed of his condition. Unused medical leave will be counted as creditable service for purposes of the state retirement system.

If any nine-month faculty member becomes temporarily disabled between the end of one academic year and the beginning of another (during the interim the employee is not teaching), he or she is not eligible for paid leave status.

If any nine-month faculty member becomes temporarily disabled prior to the end of a contract period but has accrued personal and major medical leave, he or she is not eligible to be continued on a paid leave status after the end of the contract period if the contract ends prior to using all earned leave days.

**11.4 SABBATICAL LEAVE:**

**11.4.1 Purpose:**

A sabbatical leave shall be granted for the purpose of professional improvement only. The leave enables a member of the faculty to undertake such research, writing, study, advanced degree work, or other creative endeavor as he would not be able to do in the course of his full-time university responsibilities. It is designed to increase the usefulness, the effectiveness, and productivity of faculty.

Sabbaticals leave allowed under the Mississippi statute are not granted as rest periods, vacations, or earned leave with part pay, nor for any other purpose except as explicitly stated in law. Sabbatical leaves are granted at the discretion of the university and subject to the availability of funds.

#### **11.4.2 Eligibility:**

Only full-time regular faculty members are eligible for sabbatical leave.

To qualify for one semester (four and one-half months) of leave, a faculty member must have served full-time on the faculty of Alcorn State University for six (6) consecutive semesters of regular session work before the effective date of the leave; to qualify for two semesters (nine months) of leave, the faculty member must have served twelve (12) consecutive semesters of regular session work in the university before the effective date of leave.

#### **11.4.3 Application and Plan of Activities:**

Application for sabbatical leave will be made to the Board of Trustees of State Institutions of Higher Learning through the Office of the President, Alcorn State University.

Applicants are required to submit a plan of activities during the period of leave that is to accompany their applications for sabbatical leave.

Leave requests for any part of a school year must be submitted at least six months, and preferably one year, in advance of the start of the leave. Applications are to be submitted through the departmental chairperson/dean, to the Vice President for Academic Affairs, the President, and the Board of Trustees.

#### **11.4.4 Formal Agreements and Requirements:**

A faculty member who is granted leave will be under regular contract with the Board of Trustees of State Institutions of Higher Learning for the full period of the leave.

A faculty member granted leave must enter formal agreement with the Board of Trustees to remain on the full-time regular faculty of the employing institution for one semester for each semester of leave granted, which semester shall follow immediately the termination of the leave period. This formal agreement requires repayment of salary received while on leave by anyone given sabbatical leave who does not return to work for the specified time required. Persons who fail to return from sabbatical leave forfeit their relationship with the university.

Sabbatical leave may be spent on campus or off campus, depending upon the type of activity to be undertaken. A faculty member shall not be expected to carry on committee assignments or special administrative functions during a period of leave.

Faculty members may have the right, while on sabbatical leave, to

receive any grant or stipend designed primarily to further professional growth of students, scholars and professional people, whether under the sponsorship of any institution of higher education or of an organization known generally to engage in educational promotions meritorious to higher education. Faculty members on such leave may not accept full-time employment or enter into any written or implied obligation employment which would violate the contracts for full service he will have with his institution while on leave.

Board of Trustees' approval of leave must not be later than June prior to the fiscal year in which the leave is to take place.

Sabbatical leave periods normally will be during regular session semesters. It is not intended to allow for summer school attendance only. (Report statement from 10.4.8.)

#### **11.4.5    Compensation:**

The compensation due while on sabbatical leave will be paid monthly--or according to the regular policy of the institution--and shall be paid from the regular payroll. By law, compensation for leave may not be paid for more than two semesters (9 months) of leave time.

However, a faculty member eligible for two semesters of sabbatical leave may receive sabbatical leave one semester at full pay in lieu of two semesters of leave at half pay; and a faculty member eligible for one semester of sabbatical leave at regular one-half pay may receive two semesters of leave at one-fourth pay.

#### **11.4.6    Rights and Fringe Benefits While on Leave:**

A faculty member on sabbatical leave remains a full-time employee of the Board of Trustees of State Institutions of Higher Learning with all benefits and responsibilities continued by law. These rights and benefits include those of retirement, insurance, housing, longevity, and other benefits.

#### **11.4.7    Number on Leave at One Time:**

Not more than four percent (4%) of the full-time regular faculty may be on sabbatical leave during any one semester; and no more than one member of any one department may be on sabbatical leave any one semester.

It may be necessary for faculty members to make special adjustments in sabbatical leave duties when leave is requested by more than one person of a school/department for the same period of time.

#### **11.4.8 Conclusion of Sabbatical Leave:**

Recipients of paid sabbatical leave are expected to return to full-time service at Alcorn State University for at least one academic year, and must submit a concise report of the activities during the sabbatical leave to the dean/departmental chairperson and the Vice President for Academic Affairs.

#### **11.5 LEAVES OF ABSENCE:**

##### **11.5.1 Disability Leave:**

It is recognized that employees suffer temporary sickness or disability from time to time and are therefore unable to perform assigned duties. This policy describes employee entitlement, including leave with or without pay, for such temporary sickness or disabilities.

It is the intention of this policy and its entitlement to provide leave for any temporary disability occurrence that normally has a reasonable predictable time frame encompassing an onset and an end of the condition. Leave necessary for the purpose of childbearing is included in entitlement of this policy.

Any regular full-time employee who has successfully completed the university's initial evaluation period and who suffers temporary sickness or disability, thus making him or her unable to perform assigned duties, may be granted a leave of absence without pay for a reasonable time, but not to extend normally beyond a six-month period, to accompany the combined accrued personal and major medical leave. According to board policy, nine-month faculty do not accrue personal leave.

Accrued major medical leave and/or personal leave must be used to cover work days falling within the period of entitlement. The beginning date of disability will be determined by the employee's physician and, at the discretion of the university, may have to be approved by the university's health service. The ending date of disability shall be determined by the employee's physician and, at the discretion of the university, may have to be approved by the university's health service. When the employee returns to his or her duties, the employee shall present a statement from his or her physician stating the ability to resume work. Upon returning to employment, the employee will be returned to his or her former position or to an equivalent position.

If any nine-month faculty member becomes temporarily disabled between the end of one academic year and the beginning of another (during the interim the employee is not teaching), he or she is not eligible for paid leave status. If any nine-month faculty member becomes temporarily disabled prior to the end of a contract period but has accrued major medical leave, he or she is not eligible to be continued on a paid leave status after the end of the contract period if the

contract ends prior to using all earned leave days.

**11.5.2 Military Leave:**

In accordance with state law, members of the federal and state armed forces are granted military leave for authorized training absences and will be paid during days in which they are ordered to active duty for periods of up to 15 days annually. Should a member be required to remain on active duty more than 15 days, a member shall be placed on leave of absence without pay for the remainder of his military service.

In order to secure a military leave of absence, faculty members should file a copy of the official military orders with the departmental chairperson, who forwards it to the Director of Personnel with proper notice to the dean and Vice President for Academic Affairs.

**11.5.3 Jury Duty and Elections:**

Jury duty is recognized as a civic responsibility. Regular employees, when summoned for jury duty, will be given time off with pay.

If asked to assist with the school district, municipal, county, state or federal election, an employee may have time off with pay. The employee is expected, however, to make arrangements with the supervisor before the date of such duty. Employees are expected to vote in other than work hours. Should this not be possible, one may have time off with pay to vote in county, state or federal elections.

**11.5.4 Educational Leave:**

The policy of the university has been to encourage leaves of absence for graduate and postdoctoral study. For this purpose, leaves are granted for a school year, a semester, or, on occasions, a part of a semester. No salary is paid by the institutions for the period of leave, except under the provisions of sabbatical leave policy.

**11.5.5 Application for Leave Form:**

Faculty members who have to miss classes or other official duties are required to complete an application for leave form.

**ADMINISTRATIVE ORGANIZATION**

**12.1 EXECUTIVE COUNCIL:**

The President serves as the chairman of the Executive Council. Other members include: Executive Vice President, Vice President for Academic Affairs, Vice President for Student Affairs, Vice President for Business Affairs, and Vice President for Institutional Advancement, Planning, and Research.

**12.2 RESPONSIBILITIES OF ADMINISTRATIVE OFFICERS:**

**12.2.1 President:**

The President of Alcorn State University serves as an executive officer of the Board of Trustees and is answerable to the Board on all matters pertaining to the university. The President's responsibilities include:

1. Serving as the chief administrative officer and the principal educational officer of the institution;
2. Planning, developing and administering a program of instruction, research and service suited in the broadest sense to the needs of the institution's sponsors and supporters, including the students;
3. Developing a sound administrative structure for the institution, to the end that all employees will be suitably assigned and supervised;
4. Recruiting and maintaining a qualified instructional, research and administrative staff through his recommendation to the Board of Trustees;
5. Planning and developing proper budgets for financing the institution in both capital investments and in operations;
6. Developing and maintaining efficient procedures for plant maintenance, purchasing, accounting, auditing and financial reporting;
7. Securing and supervising an educable student body in accordance with admission and retention regulations of the Board;
8. Evaluating and improving the instructional and other curricula and co-curricula services provided to the student body;
9. Developing communication channels among all staff and student groups in

the institution;

10. Disseminating information periodically about the institution to other agencies related to the constituency, to cultural, civic and business organizations, to the alumni and to the general public.

#### **12.2.2 Executive Vice President:**

The university Executive Vice President is responsible to the President and is accountable to the President for the effective and efficient operation of the computing center. In addition, the Executive Vice President serves as the chief assistant to the President in the revision and/or formulation of university policies and in developing and implementing procedures for the optimum operation of the university. The Executive Vice President serves as the university's Executive Compliance Officer. He carries out such duties as assigned by the President.

#### **12.2.3 Vice President for Academic Affairs:**

The Vice President for Academic Affairs is responsible for the administration of all academic affairs of the institution. This area includes seven instructional schools: (1) arts and sciences, (2) education and psychology, (3) agriculture and applied sciences, (4) business, (5) graduate, (6) nursing, and (7) general college for excellence. The seven schools are administered by deans who report to the Vice President for Academic Affairs. The Vice President for Academic Affairs has the ultimate responsibility for the proper coordination of curricula, course offerings, instruction and evaluation of all departments. The Vice President for Academic Affairs, acting through the Registrar and the Director of Admissions, has the responsibility for the establishment and application of admissions criteria and the preparation of all academic records. The incumbent is further responsible for the security and proper utilization of the records. His/her concern for the total academic program includes responsibility for the development and maintenance of adequate library facilities and holdings. He/she exercises the function through the Director of the Library. In performance of the incumbents duties, the Vice President for Academic Affairs works closely with the Admissions Committee and the Academic Affairs Committee, of which the incumbent is chairperson. The Director of Admissions and Recruiting reports to the Vice President for Academic Affairs.

The Vice President for Academic Affairs is charged by the President of the university to produce a total academic program that will be productive of highly qualified students. He/she is expected to be current in all academic matters and to monitor the academic institutional effectiveness process. While he/she is expected to work closely with the faculty, his/her delegation is by the President and the incumbent is responsible to the President for the execution of his/her duties.

#### **12.2.4 Vice President for Student Affairs:**

The Vice President for Student Affairs is responsible for the administration and proper functioning of all non-academic aspects of student affairs. The incumbent supervises those subordinate areas whose activities fall wholly or partly within the areas of student personnel services. Since approximately 80 percent of the students of Alcorn State University are residents, much of the responsibility of the Vice President for Student Affairs involves residence hall activities. In these, the Vice President for Student Affairs is assisted by several other administrators for student affairs, a coordinator of residence halls and several residence counselors. Under the supervision of the Vice President for Student Affairs, the Director of Student Activities is responsible for providing a well-rounded experience for all students. The officers of the Student Government Association are responsible to the Vice President for Student Affairs as they lead the members of the student body to involvement in policy development and decision-making in those areas which affect their academic and social lives.

#### **12.2.5 Vice President for Business Affairs:**

The chief fiscal officer of the university is the Vice President for Business Affairs. The incumbent is responsible for all auxiliary enterprises, for the maintenance and operation of the physical plant, and the receipt, custody, disbursement and accounting of all university funds. The Vice President for Business Affairs and all personnel working with the incumbent in handling funds are bonded. Since most activities of the university are inabstrictably interwoven with finances, the Vice President for Business Affairs has the additional responsibility of cooperating with officers of all other units in the process of budget-making and budget control.

#### **12.2.6 Vice President for Institutional Advancement, Planning and Research:**

The Vice President for Institutional Advancement, Planning and Research is responsible for coordinating the planning, development, implementation and maintenance of an effective, comprehensive, and integrated institutional advancement, planning, management, research, evaluation and assessment program at the university. Although the position interrelates to and interacts with all major functions of the institution, it is primarily responsible for the effective integration and operation of the following institutional functions: (1) coordination of fund-raising efforts of the university from private and government sources; (2) coordination of the university's strategic planning, management, evaluating and institutional research/assessment processes; (3) providing leadership and guidance in the areas of alumni affairs, placement services and public relations; and (4) coordination of the Strengthening Historically Black Colleges and Universities--Title III Program. The incumbent carries out other duties and responsibilities as are appropriate and/or as assigned by the President.

## XIII

### FACULTY COMMITTEES

The basic concept of these provisions for university governance is one of shared authority among the various components of the university. Faculty participation is exercised in the faculty assembly; student participation is exercised in the Student Government Association; and both components meet in conjunction with administrators, through elected senators, in the Academic Senate. A number of other standing committees of the faculty and university administration exist for the purpose of shared authority among the various components of the university. The committees are subject to change from time to time, either by university administration or by an election by the faculty assembly to make changes with regard to its appointment of committees.

A faculty may gain membership to a university committee either by appointment or by election, but not by both methods to the same committee. Final appointments to university committees are made by the President in consultation with appropriate administrative officers. Terms of appointment are determined at the time the appointments are made. Individuals are often appointed to university committees by virtue of their official positions and functions at the university; however, the President reserves the right to appoint any faculty to any appointed committee and to release faculty members from appointed committees as he deems necessary. Faculty members may be elected to elected committees such as the Faculty Senate and the Faculty Assembly. Details regarding the operations of those committees are contained in the constitutions and by-laws of the respective committees.

#### 13.1 FACULTY SENATE:

Members of the Faculty Senate shall include faculty members elected on a proportionate basis from the academic departments of the university and from the professional library faculty as follows: one from the first ten members and one for each additional ten members or any fraction thereof. The members must be full-time members with a minimum of one year of service at Alcorn State University; three members from the Administrative Council chosen for a three-year term according to the procedures determined within that body; and three faculty members at large. All details concerning the functions of the Faculty Senate are contained in the by-laws maintained by the Senate. All bills passed by the Faculty Senate must be approved by the President of the university before they may be implemented, and he shall notify the Faculty Senate in writing of approval or disapproval of all bills.

#### 13.2 GRADUATE COUNCIL:

This council is responsible for the development, formulation and approval of

policies affecting the conduct of the graduate program. The voting membership is composed of representatives from each of the areas offering graduate degrees and/or concentrations, a delegate from the professional library faculty, the Dean of the School of Education and Psychology, and the Dean of the School of Agriculture, Research, Extension and Applied Sciences and Deans, School of Business, Nursing and Arts and Sciences. The Dean of Graduate Studies serves as chairman of the council. The chairperson may vote in case of a tie among voting members. The council meets once each semester or on call if there is a need.

Delegates are chosen by graduate faculty members in each area offering graduate work. Departmental chairpersons of areas that are involved in graduate work and are not official delegates may sit in as nonvoting members of the council.

Among the specific responsibilities of the Graduate Council are these:

1. Determine policies of admission, retention and readmission to the graduate school and all other policies related to the conduct and standards of the graduate program;
2. Approve and improve graduate curricula and programs submitted to the council from the various departments;
3. Recommend policies related to curricular structure, academic standards, examinations, requirements and degrees, etc.; and
4. Hear all appeals from students and faculty members concerning policies that apply to them.

All policies approved by the Graduate Council must be approved by the Vice President for Academic Affairs and President of the university.

### **13.3 TEACHER EDUCATION COMMITTEE:**

This committee is responsible for the design, approval and evaluation of all teacher education programs, including the screening of applicants for admission to teacher education. The committee is chaired by the Dean of the School of Education and Psychology and its members are student and faculty representatives from all departments having programs in teacher education.

### **13.4 Council of Deans and Directors:**

This council consists of the Associate Vice President of Academic Affairs, deans of schools, director of university library, admissions, and the Registrar of the university and is concerned with curriculum development and academic standards.

Proposals originate at the departmental level and are referred to the council by the department and/or school concerned. The Vice President for Academic Affairs chairs the council.

### **13.5 FACULTY ASSEMBLY:**

The Faculty Assembly consists of all professional employees of the university who hold faculty status. The by-laws of the Faculty Assembly are:

Subject to the laws of the State of Mississippi and the regulations of the Board of Trustees of State Institutions of Higher Learning in Mississippi, the Faculty Assembly, or a body to which it delegates its power, shall be the sole body composed of faculty members, as defined in these provisions, at the university with power to perform the duties enumerated in Article I, Section I.

The Faculty Assembly may formulate, adopt, and recommend policies to the university administration for its consideration. The administration may seek input from the Faculty Assembly on any matter in which such input might be appropriate.

### **13.6 FACULTY AND STAFF DEVELOPMENT COMMITTEE:**

The purpose of the Faculty and Staff Development Committee is to review applications from faculty and staff members for university approval and support of their involvement in professional development activities. Such requests may include: 1) university-sponsored mini-research/creative activities grants; 2) conferences, seminars, short courses, and workshops; 3) educational leave; and 4) doctoral study. The members are appointed by the President and serve until they are replaced.

### **13.7 OTHER COMMITTEES:**

There are more than twenty (20) standing committees functioning at the university at the present time. The complete list, including purposes and functions, is available in the Office of the Vice President for Academic Affairs. The list of committees is subject to change dependent upon the needs and exigencies of the university.

UNIVERSITY PROPERTY MANAGEMENT

**14.1 PURCHASING:**

**Alcorn State University operates under laws enacted by the Legislature of the State of Mississippi for the purchasing of all supplies, equipment, and services. Strict guidelines for purchasing are provided by the Mississippi Division of Purchasing Supervision. The purchasing department is the only agent of the university duly authorized to obligate the university for materials or services.**

**The purchasing procedure starts, in each case, with a need that is established within the requesting department. Requests for supplies and professional services must be confirmed through the submission of a properly authorized requisition. Based upon the approved requisition, a purchase order must be issued by the purchasing department to cover the requisition before acquisition of material or services can be made. Requisitions initiated within the various departments must be processed far enough in advance of the need for the purchase to permit investigation of sources of supply and securing competitive prices, when warranted--generally for purchases amounting to \$500 or more.**

**The university's budget may contain an approved equipment budget which represents the approved equipment allocation of a department for the fiscal year. Based upon items submitted by faculty members through their department heads, this equipment budget is developed by the Budget Committee and approved by the President of the university. The purchasing agent, upon receiving this approved equipment budget, proceeds to confer with department heads for specifications. No further communication on the part of any department is needed prior to ordering of furniture and equipment by the purchasing agent. The university assumes no responsibility for purchasing unless the procedures described above are followed.**

**Detailed purchasing procedures are spelled out in the Alcorn State University Accounting Procedures Manual, available in the Office of the Director of Purchasing. A breach of these procedures constitute a serious violation of university policy. Any person violating these procedures will be called in by the department chairperson, school dean, Vice President for Academic Affairs, Vice President for Business Affairs and President. There is no excuse for not reading the rules.**

**14.2 REPAIRING EQUIPMENT:**

**All repair service must receive the approval of the purchasing agent and the Office of Business Affairs before equipment is repaired.**

### **14.3 USE OF UNIVERSITY EQUIPMENT:**

**University equipment is intended for official use in fulfilling the mission of the university. Under no circumstances will this equipment be used for other purposes.**

**Faculty members are not to carry school equipment to their homes or any other place without first securing the approval of the departmental chairperson and/or school dean.**

### **14.4 INVENTORIES:**

**Each dean/departmental chairperson is responsible for inventorying all university equipment that is under the control of their respective offices. The university property officer is responsible for maintaining a listing of all equipment within the university to reflect the responsible individual. Those persons who leave the university who have supplies or equipment under their control must secure clearance from this office in order to receive their final payroll check.**

**Inventories will be checked on a random basis from time to time. Any items unaccounted for will be charged to the individual responsible. In those instances where departments feel that a piece of equipment is obsolete and of no useful value, the university property officer should be contacted by the department chairperson and requested to initiate a meeting of the Salvage Committee to delete such property from the inventory.**

**The Department of Campus Police as well as the university property officer, should be notified immediately upon discovering that an item of property has been lost and/or stolen.**

**All equipment and supplies should be delivered directly to the Department of Receiving and Storage. This is necessary in order for the supplies to be inventoried.**

**Any person violating this policy is subject to due process, which may result in appropriate disciplinary action up to and including termination.**

UNIVERSITY RESOURCES AND SERVICES

**15.1 AUTOMOBILE REGISTRATION:**

All employees and students who operate automobiles on the campus must register their automobiles with the campus Security Office by September 15 of each year or within seven (7) days after arrival on campus. In case of an accident, the Mississippi Safety Responsibility Act requires motorists to have liability coverage or security equal to the amount of damage involved. For this reason, it is recommended that all faculty members have liability insurance on their vehicles. Decals are issued with registration and they must be affixed to the rear bumper. There is a \$5 registration fee. Failure to register a vehicle will result in the vehicle being banned from campus.

All persons registering vehicles with the Security Office will be issued written traffic regulations which have been approved for use on campus. These regulations should be studied carefully.

**15.2 BOOKSTORE:**

The university maintains a bookstore which is housed in the James L. Bolden Campus Union Building. It sells approved textbooks, instruments, general office supplies and other general merchandise. Additional services, such as special book orders, are available.

**15.2.1 Policies and Procedures for Textbooks:**

The title of the basic textbook to be used for each course is on file in the office of the school deans and with the chairperson of each department.

It is expected that the same basic text will be used for a course even though the course may be taught by different teachers. Departments are required to evaluate texts being used for the various courses offered by the department each semester. Based upon this evaluation, decisions will be made on books to be returned.

Requests for textbooks originate with faculty and must be approved by the department chairperson and dean. In cases where a textbook has been previously approved, a change of textbook will be authorized only when satisfactory provisions can be made to eliminate inventory of the previously approved text. Negotiations for such a change should be made a year in advance in writing.

Orders for textbooks and other books to be used in courses must

be made on the order forms provided and are routed through the department chairperson and school dean to the university bookstore. No textbook order should be brought to the bookstore by a faculty member. The bookstore manager will meet with the academic deans and department chairpersons to discuss these orders. They will meet March 1st on summer orders. March 15th is the deadline for submitting summer orders. May 1st is the meeting date on fall orders. May 15th is the deadline for submitting fall orders. October 1st is the meeting date on spring orders and October 15th is the deadline for submitting spring orders. If there are any date changes on any of the above, the department will be notified in advance by the bookstore manager.

The number of textbooks to be ordered for a course will be determined jointly by the bookstore manager and department chairperson.

Students are required to secure adopted textbooks. Mid-term of the semester will be the deadline for students to have books. After consulting with department chairpersons, the bookstore manager will return any unsold copies of textbooks to the publisher. This is particularly true for books which will not be used the following semester.

Faculty members whose books have not arrived when needed must notify their department chairperson, who will cooperate with the bookstore to remedy the deficiency. Faculty members should not contact the bookstore concerning textbook orders.

The bookstore manager will check on orders not filled after 15 days and report to the department chairperson on the status of all books ordered.

On all textbooks orders placed, the bookstore manager will ask for desk copies to accompany all orders. These desk copies will be released to department chairpersons for faculty use. Desk copies are the property of the university and shall so be stamped. Desk copies must be returned to the department chairperson when a faculty member leaves the university.

### **15.3 DINING HALL:**

As a convenience to employees, the university provides a dining hall for use of employees, students and visitors. Since its primary purpose is to serve students, it normally operates only when students are on campus. Serving hours are: breakfast--7:00 a.m. to 8:30 a.m.; lunch--11:30 a.m. to 12:30 p.m.; dinner--4:00 p.m. to 6:00 p.m. In addition, a grill is open in the union during the following hours: Monday through Friday--9:00 a.m. to 11:00 p.m.; Saturday--Noon until 11:00 p.m.; Sunday--5:00 p.m. to 11:00 p.m. There is no food service during vacation periods and holidays.

#### **15.4 CAMPUS NEWSPAPER:**

The university publishes the Alcorn State University Weekly Bulletin to disseminate information of interest to students, faculty, and staff on campus. The Weekly Bulletin publishes relative information to the campus community. It can include local, national, international, departmental and personal news, as well as announcements and so forth.

The Weekly Bulletin is staffed/written/assembled in the Office of Public Relations. Students and other members of the Alcorn community may submit announcements and brief articles to the public relations' staff to be included in the Weekly Bulletin. All submitted materials are subject to be edited by the staff.

Materials intended for the Weekly Bulletin must be received in the Office of Public Relations by 10:00 a.m. Monday to appear in the edition released Thursday of the same week. The Weekly Bulletin is hand delivered to each office on campus and several hundred copies are placed in such places as the campus union, cafeteria and library.

#### **15.5 CAMPUS POLICE:**

A campus police force is provided by the university for the well-being and security of all employees. While the Department of Campus Police has the overall responsibility for campus security, employees at all levels have the responsibility of maintaining a work environment that is safe and free of disturbances of all types.

In the event of any criminal act, possible criminal act, automobile accident (on university property), and other breaches of peace or security, dial 877-3000 to reach the assistance of the Department of Campus Police.

#### **15.6 HEALTH SERVICES:**

The university's health services are available to each student, faculty, and staff member enrolled or employed at Alcorn State University. The services include a medical examination and general health instructions and services. A medical fee is imposed for any individual who seeks and obtains a special medical examination. Services provided include the following: physical examinations, follow-up, counseling, temporary hospitalization (not to exceed four days), limited medicines and special off-campus consultations arranged at the patient's expense. Hours of operation are 8:00 a.m. to 12:30 p.m. and 1:30 p.m. to 12 midnight, Monday through Friday.

#### **15.7 HOUSING:**

The general purpose of university housing is to provide an additional means of attracting faculty and staff to work at the university. However, the university is in

no way obligated to provide housing for its employees, and when it does it does so on a priority basis as (1) determined by the importance of the position/employee to the protection, security, and maintenance of the university and/or (2) determined by the university. Any person desiring to secure housing on the campus should register his/her needs with the Office of Business Affairs, departmental chairpersons/deans, as well as the academic vice president, should inform the Vice President for Business Affairs any time a new faculty or staff member is being seriously considered for employment and will need housing.

**15.7.1 Availability:**

University housing of various sizes is available with the rent schedule depending upon the size. The size of the family is a factor in determining the assignment of university housing. Only members of the university faculty and staff shall be eligible for assignment to university housing. Faculty and/or staff members whose employment with the university is terminated shall vacate the housing facility they occupy in accordance with the rental agreement. In the event of death of a faculty or staff member, his/her spouse will be able to occupy the rented housing facility for a reasonable time (not more than three months, unless exception is granted by the appropriate university official) until moving arrangements can be made. If the surviving spouse is also a member of the faculty or staff, then such survivor may apply to rent housing available for his/her family size and needs as would any other faculty or staff member. The prevailing rate of rent will be charged in either case.

Faculty members who are granted tenure by the university must secure off-campus housing within one year (exception may be granted, in writing, by the appropriate university official) after the granting of tenure. However, each faculty member is encouraged to secure housing in the community when the opportunity presents itself, thereby becoming an active part of the community.

There will be no subleasing of housing. All housing units are intended for use by the faculty or staff and his/her immediate family. Immediate family means spouse and children. Any other occupant, other than a guest who remains for a short period of time, should be approved by the appropriate university official.

**15.7.2 Person to Contact:**

The Vice President for Business Affairs has the responsibility for managing university housing. Questions concerning housing should be directed to the Office of Business Affairs.

### **15.7.3 Payment of Rent and Security Deposit:**

A rental agreement requires that an appropriate amount of rent is to be paid each month in advance to the Office of Business Affairs not later than the tenth day of the month. In the event such payment is not made when due, deductions will be made from the tenant's next paycheck and thereafter by payroll deduction. Faculty and staff members should understand that rental rates are subject to adjustment at any time on notice given by Alcorn State University.

A security deposit not to exceed \$500 is required at the time the housing unit is leased, which shall be held against any damage except reasonable wear done to the property. Because the security deposit is required, the lessee of the university housing is required to participate in a pre- and post-inspections and inventory of the housing unit.

### **15.7.4 Housing Policy, Care and Inspection:**

Inspections will be made at the beginning of occupancy and before the end of occupancy or upon proper notice. However, the university reserves the right to inspect housing at any reasonable time. Inspections will normally be made during regular school business hours (8:00 a.m. to 5:00 p.m.), unless otherwise requested.

Each occupant will be responsible for keeping the lawn properly trimmed and cleaned at all times. Moreover, the occupant must see that paper, litter and other debris are removed from the premises at all times. In the event of failure to adhere to the foregoing policy, a warning will be given to the occupant. If corrective measures are not taken immediately, the university reserves the right to take whatever corrective action it deems necessary. The occupant will be responsible for paying the costs of corrective action taken.

All appliances provided in housing units should be kept clean at all times, and occupants are required to report a need for services immediately upon the indication of such.

**15.7.5 Services and Maintenance:**

The university will provide normal maintenance services on a scheduled basis.

**15.7.6 Eviction:**

After proper warning, all persons failing to obey housing policy will be requested to secure off-campus housing.

**15.7.7 Pets:**

Pets are to be kept under control, properly vaccinated and with proper identification tags.

**NOTE:** A copy of the housing policy is furnished to each person at the time the rental agreement is signed.

**15.8 LAUNDRY AND DRY CLEANING:**

Complete laundry and dry-cleaning services are available on campus. These services are restricted to students, faculty and staff members associated with the university.

**15.9 LIBRARY SERVICES:**

The university has a complete and modern library system which is housed in a modular three-story, air-conditioned structure designed to seat approximately 900 users. The library hours are Monday through Thursday, 8:00 a.m. to 10:00 p.m.; Friday, 8:00 a.m. to 5:30 p.m.; Saturday, 9:00 a.m. to 1:00 p.m.; and Sunday, 2:00 p.m. to 10:00 p.m. The library contains reading areas on two levels, a seminar room, study rooms, 47 faculty carrels, an archives room, technical services room, a shipping and receiving area, a bibliography room, a staff lounge equipped with a small kitchenette, and an audiovisual area designed for viewing and listening.

There are approximately 200,000 volumes in the library collection. Various subject indexes, encyclopedias, dictionaries, guides, handbooks, directories, fact books, bibliographies, almanacs and standard work representing the American heritage are available to support several majors offered in the seven instructional schools of the university.

The library is functionally set up with the following departments: acquisitions, catalogue department, reference department, circulation department, periodicals, audiovisuals and Alcorn archives.

The audiovisual collection contains cassettes, filmstrips, film loops,

microcards, microfiche, pictures, phonograph discs, reel-to-reel tapes, slides and transparencies. Faculty members may make reservations for class use of the listening room in connection with course requirements. It is necessary that these be made in advance by calling 877-6359 at least one day prior to use.

#### **15.10 CAMPUS SPEAKERS:**

Designated facilities at Alcorn State University may be used for public gatherings and for inviting speakers from outside of the institution. The guidelines issued by the Board of Trustees, which are applicable to all institutions of higher learning within the State of Mississippi, apply.

On December 1, 1969, a three-judge federal court entered a final decree in the litigation concerned with regulations of the Board of Trustees of State Institutions of Higher Learning governing the appearance of outside speakers on the several campuses under the jurisdiction of that board.

The court, as an appendix to its decree, promulgated rules governing the appearance on campus of outside speakers to remain in force until repealed by the Board of Trustees. The Board of Trustees has not repealed the regulations; and, as a consequence, the court-drawn rules are now and will continue to be in effect. Those regulations are:

- 1. A request to invite an outside speaker will be considered only when made by an organized student or faculty group recognized by the head of the college or university;**
- 2. No invitation by such organized group shall be issued to an outside speaker without prior written concurrence by the head of the institution, or such person or committee as may be designated by him (hereinafter referred to as his authorized designee), for scheduling of speaker dates and assignment of campus facilities.**
- 3. Any speaker request shall be made in writing by an officer of the student or faculty organization desiring to sponsor the proposed speaker not later than ten calendar days prior to the date of the proposed speaking engagement. This request shall contain the name of the sponsoring organization, the proposed date, time and location of the meeting, the expected size of the audience and topic of the speech. Any request not acted upon by the head of the institution or his authorized designee within four days after submission shall be deemed granted.**

4. **A request made by a recognized organization may be denied only if the head of the institution or his authorized designee determines, after proper inquiry, that the proposed speech will constitute a clear and present danger to the institution's orderly operation by the speaker's advocacy of such actions as:**
- a. **The violent overthrow of the government of the United States, the State of Mississippi or any political subdivision thereof; or**
  - b. **The willful damage or destruction, or seizure and subversion, of the institution's buildings or other property; or**
  - c. **The forcible disruption or impairment of, or interference with, the institution's regularly scheduled classes or other educational functions; or**
  - d. **The physical harm, coercion, intimidation or other invasion of lawful rights of the institution's officials, faculty members or students; or**
  - e. **Other campus disorder of a violent nature. In determining the existence of a clear and present danger, the head of the institution or his authorized designee may consider all relevant factors, including whether such speaker has, within the past five years, incited violence resulting in the destruction of property at any state educational institution or has willfully caused the forcible disruption of regularly scheduled classes or educational functions at any such institution.**
5. **Where the request for an outside speaker is denied, any sponsoring organization thereby aggrieved shall, upon written application to the head of the institution or his authorized designee, obtain a hearing within two days following the filing of its appeal before a Campus Review Committee, composed of three faculty members and two students of the institution, for a de novo consideration of the request. The Campus Review Committee shall have power to grant or deny the request, and its decision shall be final unless judicial review is sought as hereinafter provided. If such request is neither granted or denied within said two-day period, it shall be deemed granted and**

**the speaker's invitation shall be issued. The three faculty members to serve on the Campus Review Committee shall be appointed at each institution for a one-year term beginning September 1 of each calendar year, and this appointment shall be made by the president of the Board of Trustees of State Institutions of Higher Learning. The two student members of the campus review committee shall be the president and secretary of the student body of each institution, and they shall serve only as long as they hold these student offices.**

**Any sponsoring organization aggrieved by the action of the Campus Review Committee in denying the request may obtain judicial review thereof upon application to any court of competent jurisdiction, state or federal, by presenting its verified petition setting forth the grounds of complaint and giving adequate notice of such filing to the head of the institution. Upon a hearing to be conducted as soon as practicable, and at such time and place as the court may prescribe, the court shall either reverse or affirm the decision of the Campus Review Committee as may be proper under the law and facts.**

- 6. Where the request for an outside speaker is granted and the speaker accepts the invitation, the sponsoring organization shall inform the head of the institution or his authorized designee, in writing, immediately of such acceptance. The head of the institution or his authorized designee may, at his discretion, require that the meeting be chaired by a member of the administrative faculty, and he may further require a statement to be made at the meeting that the views presented are not necessarily those of the institution or of the sponsoring group. By his acceptance of the invitation to speak, the speaker shall assume full responsibility for any violation of law committed by him while he is on campus.**

**Complete information concerning the scheduling of speakers can be acquired from the Vice President for Academic Affairs.**

#### **15.11 PATENT POLICY:**

**Since the university participates in grants and contracts, it is required to have available a patent policy for inventions, copyrighting and so forth. The patent**

policy of Alcorn State University is attached as Appendix D of this handbook.

#### **15.12 POST OFFICE:**

A branch of the Office of U.S. Mail Service is maintained by the university with the following operating hours: Monday through Friday, 8:00 a.m. to 4:00 p.m.; Saturday, 8:00 a.m. to 12 Noon; closed on Sundays and on official holidays.

#### **15.13 DUPLICATING SERVICES:**

The university operates a printing and duplicating shop which meets many of the printing and duplicating needs of the campus. The shop operates under the control of the Vice President for Academic Affairs. The shop offers offset, mimeograph and photocopying services. In addition, the library offers photocopying services to copy library materials that can be copied without violation of the copyright restrictions. The library also provides a microfilm reader-printer for copying articles for microfilm.

#### **15.14 RECREATIONAL FACILITIES:**

The following services are available to the faculty, staff and students of Alcorn State University:

##### **15.14.1 Indoor Facilities:**

The James L. Bolden Campus Union Building has facilities for bowling, billiards, air hockey, table tennis, and other activities. Operating hours for the game area are 12:00 noon to 10:30 p.m. Monday through Thursday; 12:00 Noon to 11:00 p.m. Friday and Saturday; and 6:00 p.m. to 10:30 p.m. on Sunday.

The Davey L. Whitney Health, Physical Education and Recreation Complex contains an Olympic-size swimming pool, handball courts, a gymnastics room and a weight room in addition to many other facilities. The Director of Athletics should be contacted regarding the hours these facilities may be used for recreational purposes.

##### **15.14.2 Outdoor Facilities:**

The Alcorn State University Outdoor Recreation Park contains six tennis courts; two all-weather, all-purpose courts; a kiddy park; picnic tables; nature trail; softball field; toilet facilities and a concession stand. Hours during which the park may be used will be posted. There are also several lakes suitable for boating and fishing on the Alcorn campus.

## **15.15 TELEPHONE SERVICES:**

**Telephone services provided by the institution are intended for the sole purpose of conducting the business of the institution.**

**All request for telephone services should be made in writing to the Office of Business Affairs. All costs of telephone services by departments will be charged to the department concerned.**

**The university has authorization codes that are used for all long-distance calls. All requests for authorization codes should be made in writing to the Office of Business Affairs. Authorization code are ONLY to be used by the individuals to whom they are issued. Individuals without authorization codes desiring to make long distance calls should go through the university telephone operator. All long distance calls will be charged to appropriate departments. Abuse/illegal use of authorization codes is strictly prohibited. If abuse/illegal use is observed, authorization codes will be deactivated.**

**Individuals living in university housing may have personal telephones installed in such housing by contacting the telephone company.**

**POLICY ON COMPUTER RESOURCES  
AND SERVICES**

**16.1 COMPUTER RESOURCES AND SERVICES:**

It is the intention of Alcorn State University to provide adequate computer resources and services to meet the academic support and administrative needs of the university. The academic support computer needs are met through micro-computers located in academic facilities as well as through a mainframe computer located in the computing center. Micro-computers assigned to academic departments are under the direct control of applicable department chairpersons who are accountable for the adequacy, proper maintenance and safekeeping of such computers assigned to the departments.

The mainframe computer and other computer resources in the computing center are accessible to faculty and students; however, their usage by faculty and students must be coordinated with the Director of the Computing Center. The mainframe computer is also used as a management tool for maintaining institutional data and for generating such reports required for internal decision making and in response to authorized external entities. High priority shall be given to faculty and students who require the use of the mainframe computer to complete academic requirements and/or the analysis of data for research.

It shall be the responsibility of the institutional department chairpersons, under the leadership of the Vice President for Academic Affairs and the school deans, to ensure that the academic support computer resources are adequate and appropriate to support the academic and research programs of the university on a periodic basis and provide recommendations to the administration.

**16.2 ELECTRONIC DATA PROCESSING SECURITY:**

The university relies heavily on its electronic data processing system and computers to meet its operational, financial, and informational requirements. It is essential that these systems and machines be protected from misuse and unauthorized access. It also is essential that the university's computers and computer systems and the data that they store and process be operated and maintained in a secure environment and in a responsible manner.

To this end, the following are violations of university policy:

1. Deliberate, unauthorized attempts to access or use the university's computers, computer facilities, networks, systems, programs, or data or the unauthorized manipulation

**of the university's computer systems, programs or data;**

- 2. Deliberate, unauthorized use of Alcorn State University facilities or equipment to access non-Alcorn State University owned computers;**
- 3. Deliberate, unauthorized activity which causes Alcorn State University computers, computer facilities, systems, programs, or data to be accessed or used; and**
- 4. Deliberate activity (conducted in the course of one's employment with the university or in the course of one's enrollment as a student at the university) which causes non-Alcorn State University owned computers, computer facilities, systems, programs, or data to be accessed or used in an unauthorized manner.**

**Any such violations of university policy by any university employee or student constitute theft and/or unauthorized use of university property.**

**An Alcorn State University employee who, in the course of his/her employment, intentionally and without proper authorization, directly or indirectly engages in such activities; or who damages or destroys any computer, computer system, computer network, program, or data; or who causes such acts to occur, will be subject to disciplinary action which may result in dismissal.**

## XVII

### AREA INFORMATION

#### 17.1 VOTING:

As indicated earlier in this handbook, all employees of Alcorn State University are encouraged to vote in the local elections. To do so, employees should familiarize themselves with the voting stations within the region. These stations will be posted from time to time by the state.

#### 17.2 VEHICLE REGISTRATION (STATE OF MISSISSIPPI):

All persons arriving from out of state are advised that they should make immediate arrangements to change the registration of their vehicles to a Mississippi registration. Mississippi state laws require that this be done within thirty (30) days of a person's move into the State of Mississippi. The vehicle should be registered in the county in which the faculty member lives.

#### 17.3 MEDICAL FACILITIES IN THE VICINITY:

The health services which are available at the university are limited in scope and, therefore, it is necessary that each individual be aware of the medical facilities that are available in the vicinity of Alcorn State University. This information can be acquired from the Director of Health Services.

## XVIII

### SEXUAL HARASSMENT

**Alcorn State University officials provide a workplace free from sexual harassment. Sexual harassment may consist of request for sexual favors, unwelcome sexual advances, threats, actual bodily contact or other deliberate verbal or physical conduct of a sexual nature. Such behavior is discouraged between all employees.**

**Sexual harassment is especially forbidden where the offending employee is in a position to affect the compensation or employment status of the person being harassed. In all cases, Alcorn State University officials shall take prompt and appropriate corrective action. This rule applies equally to sexual harassment of both men and women.**

## XIX

### PUBLICATIONS POLICY

It is the intention of Alcorn State University to make every effort to ensure that all official university publications are truthful and honest in their representation of the university.

The university will not knowingly state directly or imply any information, data, or description in any of its publications to deceive or misinform its intended user. The highest standards of ethics and professionalism shall govern all official publications produced by the university. Such publications shall include: General Catalog, Faculty Handbook, Staff Handbook, A Handbook for Students, Weekly Bulletin, Alcorn Herald, The Alcorn Report, The Alcornite, website, university mass distribution brochures, departmental brochures and any other university publication approved by the university for communicating the university and its programs to students, prospective students, faculty and staff, and/or the general public.

In order to ensure the integrity of the university's official publications, there is a Publications Committee chaired by the Director of University Relations. The Publications Committee reviews and approves publications other than the university catalog. The university catalog is produced under the guidance of the Vice President for Academic Affairs, who is accountable for the quality and accuracy of that publication.

In general, the university does not advertise; however, it places announcements about course offerings in local newspapers. Such announcements conform to similar stringent rules of accuracy as do other official publications.

**DRUG-FREE WORKPLACE  
POLICY STATEMENT**

**It is the policy of Alcorn State University to maintain a drug-free workplace and workforce consistent with federal laws as set forth in the Drug-Free Workplace Act of 1988 and the Department of Defense Drug-Free Workforce Rule of 1988. Consequently, all employees--faculty, staff, part-time/full-time--are absolutely prohibited from the unlawful possession, manufacture, distribution, dispensation, sale, use or in any way involve themselves with controlled substances.**

**For the purposes of this policy, the terms controlled substances mean those defined in Schedules I through V of Section 202 of the Controlled Substances Act [21 U.S.C. 812] and as further defined by regulations at 21CFR 1300.11 through 1300.15.**

**Any faculty or staff member found in violation of the aforementioned policy while on the university campus, or while engaged in official university business off campus, shall be required to undergo mandatory assessment for drug abuse. The university reserves the right to prescribe the nature and type of corrective action(s) to be imposed on faculty or staff members found in violation of the Drug-Free Workplace Policy. Such corrective actions may include (1) issuance of warning, (2) referral for treatment, (3) suspension, or (4) termination.**

**20.1 NOTIFICATION OF CONVICTION:**

- 1. It is the policy of Alcorn State University that any faculty or staff member convicted of a controlled substance violation at the workplace is required to notify his or her supervisor or the university president within five (5) work days of such conviction. Failure to comply with this requirement shall result in disciplinary action which may include suspension pending further investigation.**
- 2. It is the policy of the university to comply with the federal law which requires that the university notify applicable federal agency(s) within ten (10) days after the university has received notification of a controlled substance conviction of any faculty or staff member whose position is federally funded.**

**20.2 CONDITION FOR EMPLOYMENT:**

**Strict adherence to the above policy and any future modification thereof is an absolute and irrevocable condition for employment at Alcorn State University.**

## **SAFETY AND HEALTH POLICY**

**It is the policy of Alcorn State University to conduct all operations as safely and efficiently as possible. This policy is consistent with the university's mission of "maintaining a campus atmosphere which is safe, healthy and conducive to cultural, personal and social development."**

**To accomplish this, the authority and accountability for safety has been assigned to all department heads and supervisory personnel within their individual area of operations.**

**A university-wide Employee Safety and Health Plan Committee has also been appointed. This committee shall be chaired by a staff or faculty designated by the President. The committee chairperson shall be the safety and health plan coordinator. It shall be the responsibility of the coordinator to administer university-wide safety efforts and to coordinate these efforts with all departments to ensure that safety standards are met throughout the institution. Each department must establish a departmental safety and health plan committee.**

**All employees must perform their duties and responsibilities in a safe and efficient manner and report unsafe conditions to their department head or supervisor for prompt correction.**

**In the case of vehicle operation, drivers are expected to follow the principles of defensive driving; i.e., to drive so as to prevent accidents in spite of the incorrect action of others and in spite of adverse driving conditions.**

## XXII

### IMMIGRATION FORMS I-9

All new employees are required by the provisions of the Immigration Reform and Control Act of 1986 to complete government Form I-9 before or immediately following employment. This form attests to the individual's eligibility for employment in the United States. Certain specific documents must be presented to your supervisor which will prove your eligibility for employment in this country. This law applies to all individuals, regardless of employment status, who enter into an employee/employer relationship with Alcorn State University.

## XXIII

### ADMINISTRATIVE POLICY AND PROCEDURES ON SCIENTIFIC INTEGRITY

It is the policy, posture, and practice of Alcorn State University to comply with all applicable federal and state laws and regulations regarding scientific integrity at the university. To this end, all researchers at the university are expected and obligated to ensure that all applicable research is conducted in a manner which is consistent with the U.S. Department of Health and Human Services--Public Health Service Regulations, 42 CFR Part 50, Subpart A. It is the intention of the university to be in full compliance with the aforementioned policies.

While the emphasis of the university is on compliance with and adhering to ethical standards and applicable regulations in all scientific endeavors, the university will take immediate and appropriate actions to investigate any allegations of scientific misconduct that may be reported or uncovered and will take any corrective action that may be necessary. Any allegation of scientific misconduct on the part of any employee of the university must be reported to the university president immediately. The President will, in turn, initiate the official investigation of the allegation(s).

A copy of the U.S. Department of Health and Human Services--Public Health Services Compliance Procedures, to which the university adheres, is on file in the Office of Institutional Advancement, Planning, and Research. Copies have been disseminated to all Vice Presidents, deans, department chairpersons and to research scientists at the institution.

## **APPENDIX A**

### **TERMINATION FOR CAUSE (DISMISSAL) OF A TENURED FACULTY MEMBER OR A FACULTY MEMBER WHOSE TERM OF APPOINTMENT HAS NOT EXPIRED**

#### **I. INITIATION OF PROCEEDINGS:**

**As provided for in board policy, termination for cause of a continuous appointment, or the dismissal for cause of a teacher previous to the expiration of a term appointment, shall not be recommended to the Board of Trustees by the executive head of the institutions without submitting the recommendation of the appropriate faculty committee. Formal termination proceedings are commenced by furnishing to the faculty member a letter from the president of the university containing a statement of the charges against the faculty member. This letter should contain the following information:**

- 1. A statement of specific charges against the faculty member;**
- 2. Information that the faculty member has a right to a hearing before an impartial faculty committee; and**
- 3. A tentative date for the hearing; at least twenty (20) workdays after the receipt of the statement of charges.**

#### **II. RESPONSE:**

**The faculty member so charged should state in reply whether a hearing is desired and, if so, should answer in writing--not less than one (1) week before the date of the hearing--the charges as stated in the President's letter.**

#### **III. SUSPENSION:**

**Suspension of the faculty member during the proceedings involving the faculty member is justified only if immediate harm to the faculty member or others is threatened by continuance of the faculty member.**

#### **IV. HEARING COMMITTEE:**

**The appropriate faculty committee for receiving of dismissals is appointed by the president of the university. It may consist of the Vice President for Academic Affairs, one member from each academic rank, and the chairman of the department with which the person involved is connected.**

#### **V. PROCEDURE:**

**If the faculty member has not requested a hearing, the committee shall meet and consider the case on the basis of the obtainable information and decide whether the faculty member should be removed. However, a faculty member may resign and avoid a hearing or any inquiry by a hearing committee.**

**When a hearing has been requested, the committee shall proceed by considering the statement of grounds for dismissal already formulated and the faculty member's response written before the time of the hearing.**

**The President shall have the option of attendance during the hearing. The President may designate an appropriate representative to assist in developing the case, but the committee shall determine the order of proof, conduct the questioning of witnesses, and, if necessary, secure the presentation of evidence important to the case.**

**The committee may, with the consent of the parties concerned, hold joint pre-hearing meetings with the parties in order to: (1) simplify the issue; (2) affect stipulations of facts; (3) provide for the exchange of documentary or other information; and (4) achieve such other appropriate pre-hearing objectives as will make the hearing fair, effective and expeditious.**

**The committee hearing shall be governed by the following rules and regulations:**

- 1. The hearing shall be private.**
- 2. During the proceedings, the faculty member shall be permitted to have an academic advisor or counsel of the faculty member's own choice. The university may also have counsel present.**
- 3. A record of the hearing or hearings shall be made.**
- 4. The Hearing Committee shall grant adjournments to either party to enable it to investigate evidence to which a claim of surprise is made.**
- 5. The faculty member shall be afforded an opportunity to obtain necessary witnesses and documentary or other evidence.**

**Administration shall cooperate with the Hearing Committee in securing witnesses and making available documentary and other evidence.**

**6.The faculty member and the administration shall have the right to confront and cross-examine all witnesses. Where the witnesses cannot or will not appear but the committee determines that the interest of justice requires admission of their statement, the committee shall identify the witnesses, disclose their statements, and, if possible, provide for interrogation.**

**7.In the hearing of charges of incompetence, the testimony shall include that of qualified faculty members from this or other institutions of higher learning.**

**8.The Hearing Committee will not be bound by strict rules of legal evidence and may admit any evidence that is of probative value in determining the issues involved. Every possible effort shall be made to obtain the most reliable evidence available.**

**9.The findings of fact in the decision shall be based solely on the hearing record.**

**10.The burden of proof that adequate cause exists rests with the institution and shall be satisfied only by clear and convincing evidence and the record considered as a whole.**

**11.Except for such simple announcements as may be required, covering the time of the hearing and similar matters, public statements and publicity about the case by either the faculty member or administrative officers shall be avoided so far as possible until the proceedings have been completed. The President shall be notified of the decision in writing and shall be given a copy of the record of the hearing.**

#### **VI.COMMITTEE DECISION:**

**After the hearing is concluded, the committee shall meet to reach its conclusion.**

**The committee will report to the President whether or not adequate cause for dismissal has been established by the evidence in the record. If the hearing committee concludes that adequate cause for dismissal has been established but that an academic penalty less than dismissal would be more appropriate, it will so recommend with supporting reasons.**

## **VII.PRESIDENT'S DECISION:**

**The President shall consider only evidence that was presented during the hearing. If the President rejects the report of the committee, the reason for doing so shall be stated in writing to the committee and the faculty member. The**

**President then refers the entire proceeding to the Board of Trustees for consideration. The decision of the Board of Trustees is final; however, this shall not preclude the faculty member from seeking recourse from appropriate state or federal agencies or courts. A copy of the hearing proceedings shall be available for inspection upon request of the faculty member.**

## **APPENDIX B**

### **GRIEVANCE PROCEDURES**

#### **I.FILING A GRIEVANCE:**

**When a faculty member has been unable to obtain a satisfactory solution to a grievance, formal grievance procedures may be initiated by the faculty member by filing a written grievance with the Vice President for Academic Affairs and requesting that a grievance committee be convened. The written grievance should state in detail facts from which the grievance arose and the results of any preliminary attempts to solve the problem.**

**When the Vice President for Academic Affairs receives a written grievance and request to convene a grievance committee, the Vice President shall establish a committee from the grievance committee panel under procedures set out below.**

#### **II.OUTLINE AND TIMETABLE:Please refer to the Chart No. 1**

#### **III.GRIEVANCE PANEL:**

**Each academic year, the president of the university shall appoint nine (9) faculty members to serve on a standing university grievance panel. The names of those appointed shall be arranged alphabetically to create a panel from which grievance committees may be appointed. Service on grievance committees shall be automatically rotated. Each grievance committee shall be made up of three (3) members of the standing panel. The first grievance committee of any academic year shall be made up of the first three names on the alphabetically listed panel.**

**The Vice President for Academic Affairs shall notify those three members of the panel who are next in line for service by letter and include a copy of the grievance. Any member of the committee who feels that an impartial decision on a particular matter cannot be rendered by such member because of personal involvement with any of the parties, a particular school or department involved shall so state to the Vice President for Academic Affairs within five (5) days of receipt of the appointment. The Vice President for Academic Affairs will then appoint the next person(s) on the rotating panel as a replacement.**

**When a committee of three is obtained, the Vice President for Academic Affairs shall so notify the grievant. The grievant shall be allowed to challenge the service by any member of the committee who, in the opinion of the grievant, cannot consider the grievance impartially. Should the grievant elect to exercise this right, the grievant should notify the Vice President for Academic Affairs, and if the Vice President for Academic Affairs concurs, the challenged member shall be excused. The Vice President for Academic Affairs shall then notify the next name on the list to serve on the committee. This process may continue until a**

committee of three has been established.

**I. GRIEVANCE PROCEDURES**

<b>STEPS &amp; ACTIONS OF EMPLOYEE</b>	<b>TIME LIMIT</b>	<b>ACTION OF EMPLOYER</b>	<b>TIME LIMIT</b>
<b>1. Employee discusses grievance directly with department chairman.</b>	<b>Within ten working days of occurrence.</b>	<b>Department chairman discusses grievance fully with employee and renders decision and reasons for decision.*</b>	<b>Decision within five working days of first meeting.</b>
<b>2. If department chairperson's decision is not acceptable to employee, he/she may request review by the dean through the department chairman.</b>	<b>Within five days of notification of department chairman's decision.</b>	<b>Department chairman establishes meeting with dean and faculty member. Dean hears grievance and renders a decision and gives reasons for decision.*</b>	<b>Meeting scheduled within ten working days of notification of review. Decision rendered at meeting or no later than five working days after meeting.</b>
<b>3. If the dean's decision is not acceptable to employee, he/she may request review by the Vice President for Academic Affairs through the dean.</b>	<b>Within five days of notification of dean's decision.</b>	<b>Dean establishes meeting with Vice President for Academic Affairs and faculty member. Vice President for Academic Affairs hears grievance and renders decision and reasons for decision.*</b>	<b>Meeting scheduled within ten working days of notification of review. Decision rendered at meeting or no later than five working days after meeting.</b>

<p><b>4. If Vice President for Academic Affairs' decision is not acceptable to employee, he/she may request review in writing on grievance report form to the Faculty Grievance Committee.</b></p>	<p><b>Within five working days after notification of third decision.</b></p>	<p><b>The Vice President for Academic Affairs establishes meeting of Faculty Grievance Committee. The committee hears grievance and makes recommendation to President, with copy to faculty members.* President's decision and reasons shall be confirmed to faculty member in writing.</b></p>	<p><b>Meeting scheduled as soon as feasible after written request. Recommendation to the President within five working days after meeting. President's decision to faculty member within ten working days after receipt of recommendation.</b></p>
--	--	---	--

**\*Faculty member may be accompanied by co-worker from same school. The faculty member and/or the charged party(ies) may present witnesses or documents before the committee. The committee may request pertinent documents for review.**

## **GRIEVANCES BASED ON AFFIRMATIVE ACTION PROGRAM**

### **A.Character of Proceedings:**

The affirmative action program of Alcorn State University provides that persons who feel that they have been the object of discriminatory treatment in violation of the affirmative action program may utilize the grievance procedure. It is the role of the grievance committee to investigate the complaint as presented to the committee by the grievant to obtain all facts in the dispute and to come to a conclusion whether the grievant had good cause to complain. A grievance committee convened pursuant to the affirmative action program must come to a conclusion as to whether the procedures and rules, regulations, and standards of the involved administrative unit have been applied in a discriminatory manner.

This may sometimes necessitate an examination of the qualifications of a grievant's department or school, but the committee should refrain from making the grievance procedure a review and assessment of the professional qualifications of the grievant, as it is not within the scope of any grievance committee to make an evaluation of the professional qualifications of the grievant. This is the responsibility of the appropriate peer group, administrator and consultants within the concerned department and school.

### **B.Rights and Responsibilities of the Grievant:**

1.The grievant shall state the grievance listing the specific items on which the allegations of discrimination are based and naming those charged with discrimination.

2.The grievant may be advised by counsel, but must represent himself/herself in presenting his/her own case before the committee.

3.The grievant shall be allowed to present any available witnesses or documents. The grievant may request that the committee call witnesses or produce documents that are unavailable to the grievant. However, it should be noted that the committee does not have subpoena authority or power to compel witnesses to appear at any grievance hearing.

4.The grievant may be present and hear any witnesses the committee wishes to call, to question those witnesses and to inspect and rebut other statements considered.

### **C.Rights and Responsibilities of the Charged Party:**

1.Persons charged with discrimination by the grievant shall be allowed to present any available witnesses or documents.

2.Charged parties may be present and hear and question all witnesses and to inspect and rebut other statements considered.

**3.Charged parties may be advised by counsel.**

**D.Rights and Responsibilities of the Grievance Committee:**

**1.The Grievance Committee shall limit its investigation to the issue of discrimination and has the right to exclude any portion of the grievance which, in their opinion, is not a proper subject for an affirmation action grievance. The Grievance Committee may request that the grievant resubmit the grievance with more specificity if, in the opinion of the committee, the nature of the grievance is not clearly defined.**

**2.The committee may hold preliminary meetings with the grievant and other parties to schedule the hearing and appearance of witnesses, provide for exchange of documents, and to achieve other appropriate objectives to make the grievance procedure fair, effective and expeditious.**

**3.The committee may question the grievant and any witnesses the grievant wishes to present.**

**4.The committee may call any other witness necessary to the collection of all relevant facts. The committee shall have access to and may consider any university records which are pertinent to the proceeding.**

**5.The committee must give at least fifteen (15) days' notice to the grievant of the time and the date at which the hearing is to begin and the location of the hearing. The chairperson of the committee shall work with the grievant in establishing times for appearances of witnesses to be presented by the grievant. The fifteen (15) day notice period may be shortened upon request of the grievant and the availability of the committee.**

**6.A record of the proceedings shall be kept.**

**7.The formal rules of evidence shall not be applicable.**

**8.The committee shall be guided in its decision only by the evidence presented at the hearing.**

**9.A grievance hearing shall be confidential and only those concerned shall be included in the grievance hearing.**

**E.The Committee Report:**

**When the hearing is concluded, the committee shall summarize the evidence that was heard and the conclusions of the committee reached. Copies of the report**

shall be sent to the grievant and to the Vice President for Academic Affairs, who convened the committee. The Vice President for Academic Affairs shall seek to resolve the grievance and, in so doing, shall give considerable weight to the report of the Grievance Committee.

**F.Final Action:**

If the grievance has not been resolved within thirty (30) days after the Vice President for Academic Affairs has received the report, the grievant may appeal to the president of the university. The Vice President for Academic Affairs shall then forward to the President the committee report along with his recommendation. The President shall act within thirty (30) days after receiving the report and, in so doing, shall give considerable weight to the report of the committee. Should the President's action be inconsistent with the report of the Grievance Committee, the President shall state his reasons to the committee and the grievant.

**V.ALL GRIEVANCES OTHER THAN AFFIRMATIVE ACTION:**

**A.Character of the Proceeding:**

The grievance procedure is not an administrative hearing such as that afforded to persons who have been dismissed; therefore, the grievance procedure does not include all of those due process rights required in administrative hearings very much like court proceedings. It is the role of the Grievance Committee to investigate the complaint as presented to the committee by the grievant, to obtain all the facts in the dispute, and to come to a conclusion as to whether the grievant had good cause to complain. In grievances concerning the terms of faculty appointment, promotion, non-reappointment or the award of tenure, the role of the Grievance Committee is to determine whether the grievant has had all of the benefits of the procedures afforded by the grievant's contract and the university rules and regulations, and whether the decision which forms the basis for the grievance was the result of adequate consideration in terms of the relevant standards of the university. It is not within the scope of any grievance committee to make judgements on the professional qualifications of the grievant. That is the responsibility of the appropriate peer group, administrator and consultants within the concerned department and school.

**B.Rights and Responsibilities of the Grievant:**

1.The grievant shall state his/her grievance with specificity.

2.It is the responsibility of the grievant to present all the facts and to prove the merits of the grievance. To this end, the grievant shall be allowed to present any witnesses or documents on the grievant's own behalf.

3.The grievant shall not be represented by counsel.

**4. Formal rules of evidence shall not be applicable.**

**C. The Responsibilities of the Grievance Committee:**

**1. The committee shall give fifteen (15) days notice of the time and date at which the hearing is to begin and the location of the hearing.**

**The chairperson of the committee shall work with the grievant in establishing times for the appearance of witnesses to be presented by the grievant.**

**2. The committee may hold one or more preliminary meetings with the grievant and other parties to schedule the hearing and appearance of witnesses, provide for exchange of documents, and to achieve other appropriate objectives to make the grievance procedure fair, effective and expeditious.**

**3. The committee may question the grievant and any witnesses the grievant wishes to present.**

**4. The grievance committee may call such witnesses and examine such documents as it considers necessary.**

**5. A record of the proceedings should be kept.**

**6. A grievance hearing shall be confidential and only those concerned should be included in the grievance hearing.**

**7. The committee shall be guided in its decision only by the evidence presented at the hearing.**

**D. The Committee Report:**

**When the hearing is concluded, the committee shall summarize the evidence that was heard and the conclusions of the committee reached. Copies of the report shall be sent to the grievant and to the Vice President for Academic Affairs, who convened the committee. The Vice President for Academic Affairs shall seek to resolve the grievance and, in so doing, shall give considerable weight to the report of the Grievance Committee.**

**E.Final Action:**

**If the grievance has not been resolved within thirty (30) days after the Vice President for Academic Affairs has received the report, the grievant may appeal to the president of the university. The Vice President for Academic Affairs shall then forward to the President the committee report along with his recommendation. The President shall act within thirty (30) days after receiving the report and, in so doing, shall give considerable weight to the report of the committee. Should the President's action be inconsistent with the report of the Grievance Committee, the President shall state his reasons to the committee and the grievant.**

## **APPENDIX C**

### **TERMINATION OF A FACULTY MEMBER DUE TO A BONA FIDE FINANCIAL EXIGENCY**

#### **I.TERMINATION:**

Termination of a tenured or non-tenured faculty member due to a bona fide financial exigency is commenced by furnishing to the faculty member one year in advance of the expected termination date, a letter from the president of the university containing a statement that the appointment will be terminated due to a bona fide financial exigency. The letter should contain the following information:

1.A statement of specific reasons for termination, providing names of those persons upon whose judgement and advice the decision to terminate has been made and/or documents on which the university has relied in making the termination decision.

2.Information that the faculty member has a right to a hearing before an impartial committee and that such right may be exercised by notifying the President within fifteen (15) days of the receipt of notice of termination that a hearing is desired.

#### **II.THE HEARING COMMITTEE:**

If a faculty member requires a hearing, a hearing shall be conducted by a committee appointed from the faculty assembly. This committee shall consist of three (3) faculty members and shall select its own chairperson.

#### **III.PROCEDURE:**

The committee chairperson shall notify the faculty member by mail of the date, place and time of hearing to be set no later than thirty (30) days after the receipt of the request for hearing. The notification shall also contain the names of the hearing committee members.

The committee may, with the consent of the parties concerned, hold joint prehearing meetings with the parties in order to : (1) simplify the issues; (2) effect stipulations of facts; (3) provide for the exchange of documentary or other information; and (4) achieve such other appropriate pre-hearing objective as will make the hearing fair, effective and expeditious.

The committee shall be governed by the following rules and regulations:

1.The hearing shall be private.

2.During the proceedings, the faculty member shall be permitted to

have an advisor or counsel of the faculty member's own choice.

3.The university shall be represented by a counsel.

4.A verbatim record of the hearing or hearings shall be taken and a typewritten copy shall be made available to the faculty member, without cost, at the faculty member's request.

5.The Hearing Committee shall grant adjournments to either party to enable them to investigate evidence to which a claim of surprise is made.

6.The faculty member shall be afforded the opportunity to obtain necessary witnesses and documentary or other evidence. The administration shall cooperate with the Hearing Committee in securing witnesses and making available documentary and other evidence.

7.The faculty and the administration shall have the right to hear and cross-examine all witnesses.

8.The Hearing Committee shall not be bound by strict rules of legal evidence and may admit any evidence which is of probative value in determining the issue involved.

9.Findings of fact, if the decision shall be based solely on the hearing record.

10.Bona fide financial exigency shall be determined by the institution in collaboration with the Board of Trustees of State Institutions of Higher Learning.

#### **IV.COMMITTEE DECISIONS:**

After hearing is concluded, the committee shall meet to reach its conclusion. The committee shall report to the President whether or not a bona fide and demonstrable financial exigency has been established by the evidence in the record.

#### **V.THE PRESIDENT'S DECISION:**

The President shall consider only evidence that was presented during the hearing. If the President rejects the report of the committee, the reasons for so doing shall be stated, in writing, to the committee and the faculty member. The

**President shall submit his decision to the Board of Trustees for final action. However, this shall not preclude the faculty member from seeking recourse from appropriate state or federal agencies or courts.**

## **APPENDIX D**

### **PATENT POLICY**

**In view of the increase in and diversification of the university's research efforts, periodic changes in the patent policy, as stated below, will be necessary to comply with obligations undertaken with federal agencies. Current information may be obtained from the patent administrator of the university.**

**In view of the far-reaching research in the various schools of the university, it is inevitable that new discoveries and inventions will be made. The university recognizes that the protection and control provided under the patent laws may have to be invoked to obtain the greatest public benefit and usefulness from the products of scientific research. It is recognized that employees of the university need assistance in determining and evaluating patentability and in prosecuting patent application of inventions made by them. Many such inventions involve equities beyond those of the inventor, since the use of university facilities, the assignment of duties as a condition of employment, and the use of research funds with contractual obligations regarding patent rights give rise to complicated questions concerning rights and equities of all parties concerned.**

**1.The president of the university shall appoint a university patent committee, composed of members representative of the entire university, to administer the policies of the committee. This committee and the patent administrator shall serve at the pleasure of, and their actions shall be subject to the approval and right of review of, the president of the university.**

**2.Subject to the approval of the president of the university, the Patent Committee shall have power to adopt such rules and procedures as are deemed appropriate; to determine the interest of the university in all reported inventions; to cause all reported inventions to be investigated in order to evaluate the interest of the university in said invention (with due consideration given to the achievement of the inventor and the financial returns to the inventor and the university); to authorize the patent administrator to execute a release when the Patent Committee decides that the university has no interest in the invention or decides that the university does not desire to pursue the patenting or development of the patent; and to authorize applications for patents on reported inventions, and to retain patent counsel in association for matters pertaining to patent applications, and to make recommendations to the president of the university with regard to the prosecution and protection thereof and**

any litigation that may arise therefrom. The Patent Committee shall also have power to do all things appropriate for the investigation of patent rights and for the exploitation of patent rights by direct exercise, exclusive or nonexclusive licensing, and make recommendations to the president of the university with regard to partial or total assignment or sale thereof. All questions concerning the methods by which the patent shall be commercially exploited shall be decided by the Patent Committee.

3. All faculty members and university employees, both while employed by the university and thereafter, shall report to the Patent Committee any invention or discovery which they have conceived or developed or which has been conceived or developed under their direction during their university employment.

4. Any such invention or discovery (a) which is the result of research carried on by or under the direction of any employee of the university and/or having costs thereof paid from university funds under the control or administered by the university; or (b) which is made by an employee for the university which relates to the inventor's field of work at the university; or (c) which has been developed in whole or in part by the utilization of university resources or facilities belonging to the university, shall be assigned to the university or a university-designated, nonprofit organization established for its benefit. In other situations, the Patent Committee should determine that the university has no interest in the invention or discovery. Releases shall be executed by the patent administrator when the Patent Committee decides that the university has no interest in the patent or does not desire to pursue the patenting of the invention.

5. The Patent Committee shall cause each invention or discovery to be investigated in order to determine the interest of the university, and, if the Patent Committee determines that the university has an interest in the invention, the committee shall consider the benefits that might accrue to both the university and inventor. The Patent Committee and the patent administrator are responsible for the prompt action for the purpose of protecting the property rights of the inventor and the university.

6. As further consideration for the assignment rights set forth herein, the university agrees to pay annually to the inventor, and heirs and assigns of the inventor, 50 percent (50%) of the royalties, fees or other financial returns received by the university from such inventions after a deduction of 15 percent (15%) thereof for overhead

**costs, plus a deduction for costs of patenting and protection of patent rights. Recoupment of any unusual expenses paid by the university for the inventor may be allowed by the Patent Committee on patents assigned to the university or to a university-designated, nonprofit organization established for its benefit.**

**7.The above policy shall not preclude the properly designated university officials from approving the executing research proposals, contracts, grants, and consulting agreements from or with the United States government or its agencies, from or with corporations, or from or with individuals wherein the university's patent interest and the patent interest of the research, with approval of the researcher, are at variance with the above paragraphs; and the terms of said contracts, grants and agreements to the Patent Committee for recommendations prior to approval. To the extent of the provisions of these proposals, contracts, grants and agreements permit, the university shall administer such patents to provide exclusive licensing or on a royalty-free or on a reasonable royalty basis. Exclusive licensing may be utilized for limited periods when further development is needed or investment of risk capital is not readily available or there is another inventive for the development of the invention.**

**8.This statement of policy shall not apply to copyrights, except as they may pertain to inventions covered by this policy.**

## **APPENDIX E**

### **POLICY ON COPYRIGHT LAWS AND REGULATIONS**

**It is the policy of Alcorn State University that all faculty, staff and students must comply with all applicable federal and state laws and regulations on copyright.**

**Copyright violation is a crime which is punishable. The university will not be liable for any infraction of copyright laws or regulations by any university employee or student.**

## APPENDIX F

### THE ALCORN ODE

#### ALCORN ODE

*Beneath the shade of giant trees,  
Fanned by a balmy southern breeze  
Thy classic walls have dared to stand  
A giant thou art in learning's band;  
O, Alcorn dear, our mother, hear  
Thy name, we praise, thy name we sing.*

*Thy name thy sons have honored far;  
A crown of gems thy daughters are;  
When country called her flag to bear,  
The Gold and Purple answered, "Here"  
O, Alcorn dear, our mother, hear  
Thy name, we praise, thy name we sing.*

*Far as our race thy clan shall need--  
So far to progress thou shalt lead  
Thy sons with clashing arms of trade;  
In useful arts full garbed thy maids;  
O, Alcorn dear, we proudly bear  
Thy standard on to victory.*

--Mrs. J. S. Himes