

ALCORN STATE UNIVERSITY

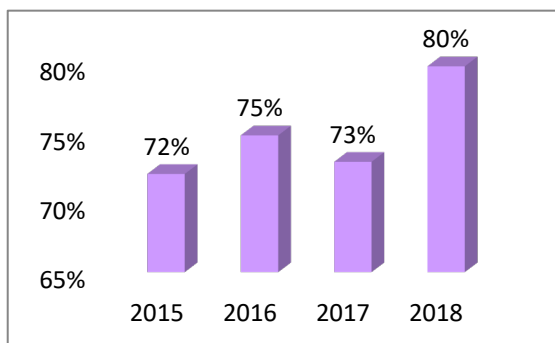
RETENTION OF FIRST-TIME ENTERING FRESHMEN

FALL 2009- 2019

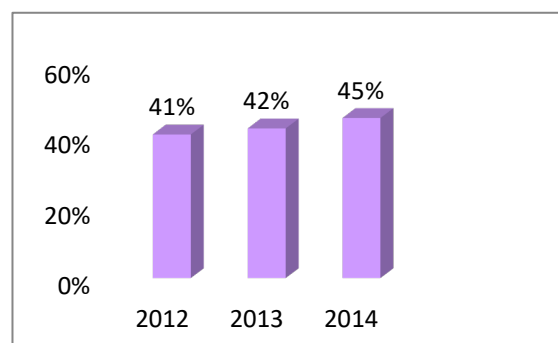
Class	FTF*	Returned 2nd Year	Returned 3rd Year	Returned 4th Year	Returned 5th Year	Returned 6th Year	Graduated thru 4th Year	Graduated thru 5th Year	Graduated thru 6th Year
2009	463	318 69%	267 58%	240 52%	121 26%	49 11%	77 17%	135 29%	158 34%
2010	588	392 67%	307 52%	276 47%	165 28%	77 13%	99 17%	153 26%	180 31%
2011	659	455 69%	365 55%	309 47%	150 23%	60 9%	104 16%	180 27%	216 33%
2012	563	385 68%	318 56%	275 49%	131 23%	48 9%	108 19%	187 33%	229 41%
2013	545	414 76%	337 62%	278 51%	128 23%	74 14%	122 22%	199 37%	231 42%
2014	494	374 76%	290 59%	271 55%	128 26%	37 7%	117 24%	196 40%	224 45%
2015	598	431 72%	342 57%	307 51%	146 24%		149 25%	237 40%	
2016	525	393 75%	318 61%	285 54%			175 33%		
2017	732	534 73%	442 60%						
2018	600	479 80%							
2019	512								

Full-time students only
Includes summer terms

RETURNED 2ND YEAR



GRADUATED THRU 6TH YEAR



Source: Institutional Research and Assessment